

# Slipper Mill Pond Preservation Association CIO

## AGM – 18 March 2026

relating to the financial year 1 October 2024 – 30 September 2025

**Questionnaire results with lowest score (out of 5) shown first**  
**So far 30 responses out of 130 members.**  
**Form is still available online (see newsletter for link)**

I think the planting is good at Dolphin Quay	3.4
I know who the current Trustees are and what they do	3.7
I think the infrastructure at Dolphin Quay is well managed (footpath, banks etc)	3.7
I am familiar with the SMPPA website <a href="http://www.smppa.org.uk">www.smppa.org.uk</a>	4.0
I think the SMPPA generally takes into consideration any feedback from Members regarding the maintenance of planting	4.2
I think the variety of plants is generally good around the Pond	4.4
I am generally satisfied with the Pond and Dolphin Quay	4.5
I think the infrastructure around the Pond is well managed	4.5
I think that the SMPPA promotes and encourages wildlife as much as it can	4.5
I believe that the planting is well maintained and managed.	4.5
I am generally satisfied with the SMPPA	4.6
I think that the SMPPA and the Slipper Mill Pond are well managed	4.7
Communication (newsletters, email updates etc) are of appropriate frequency, content and timely.	4.7
I read the newsletters	4.8

# AGENDA

Chairman's welcome and apologies for absence

1. To approve the Minutes of the previous AGM held on 13 March 2025
2. To receive the Annual Report of the Chairman and Trustees for the year ending 30 September 2025
3. To receive, and, if agreed, approve, the Annual Statement of Accounts for the year ending 30 September 2025
4. To elect Trustees of the CIO
5. Chairman's update
6. Any other business / Any questions at end

# CHAIRMAN'S WELCOME

## from Jo Greenfield

**Attendees: 29 (14 voting households excluding Trustees)**

**Trustees** (5 of 5): Jo Greenfield, Simon Dwyer, Simon Eveleigh, Jim Hailstone, Christine Hows

**Members** (\* indicates associate/non-voting members)

- Angela & Nigel Armstrong\*
- Harry Baldwin
- Alex & Dominic Gibb-Gray
- Jenny Hailstone
- Mike Hollis
- Clive & Katie Johnston
- Tim & Catherine Jones
- Chrissie & Chris MacLean
- Nick Madinaveitia
- Brenda Scott
- Betty Smith
- Rob & Lucy Turner
- David & Jan Urry
- Mark Wilkinson & Stephanie Bamford
- Pam Wilkinson
- Helen Yoward

# CHAIRMAN'S WELCOME

## from Jo Greenfield

- WELCOME, especially to any new members
- 136 total Members as of end Sept 2025 – currently 105 full or honorary (voting) members
- **Apologies for absence (10)**
  - Carol Common
  - Fraser & Susan Dibden
  - Tim Hollins
  - Bill & Gill Keeble
  - Barbara Melrose
  - Trena Nicholls
  - Sarah Plender
  - Jonathan Robertson
  - Jane Smith
  - Jane Yoward

# CHAIRMAN'S WELCOME

## from Jo Greenfield

- **Postal /Email Votes received supporting all motions (5):**
  - Tim Hollins
  - Trena Nicholls
  - Sarah Plender
  - Jonathan Robertson
  - Jane Smith

# VOTING PROCESS - CONSTITUTION

- FULL members only can vote, not Associate Members/Friends
- ONE vote per household
- Votes first
- Chairman's report - overview of activities
- Questions at the end

\*\*Quorum for AGM is:

- 5% of (105) full members (ie 5) or 3 full members – whichever is greater
- 2 trustees or 33% of 5 trustees (ie 2) - whichever is greater

# AGM MINUTES – MOTION 1

- To approve the Minutes of the previous AGM held on 13 March 2025 (Minutes sent out by email and/or hand delivered)

*The Motion was approved*

# 2024-25 ANNUAL REPORT – MOTION 2



CHARITY COMMISSION  
FOR ENGLAND AND WALES

Slipper Mill Pond Preservation Association CIO  
Registered Charity No. 1180249  
www.smppa.org.uk

## ANNUAL REPORT OF THE TRUSTEES

for the period 1st October 2024 to 30th September 2025

Charity Name:	Slipper Mill Pond Preservation Association CIO (SMPPA CIO)
Registered Charity Number:	1180249
Charity's Registered Address:	56 King Street, Emsworth, PO10 7AZ

### 1. Objectives and Activities of the CIO and its Governing Document

Slipper Mill Pond Preservation Association "The CIO" is governed according to its constitution which states that its objectives are:

*'To protect and conserve the wildlife and natural environment of the Slipper Mill Pond, which is located in the Parish of Southbourne, West Sussex, for the benefit and quiet enjoyment of the public.'*

The Trustees have had regard to the Charity Commission's guidance on public benefit.

The CIO manages the Pond and its environs, focusing on the environment, conservation, heritage and recreation, while providing an open space for the general public. The Pond is a saline lagoon, a very rare wildlife habitat, both in the UK and Europe. The combination of sea and fresh water provides a unique brackish water environment which has been recognised as a Sussex 'Local Wildlife Site' (LWS) and 'Site of Nature Conservation Importance' (SNCI) as it is home to many special species. It is inside the Chichester Harbour Area of Outstanding Natural Beauty (AONB) and is part of the Chichester District Council Strategic Wildlife Corridor from Hermitage to Westbourne. The Pond is listed as a "Local Green Space" on the Southbourne Parish Neighbourhood Plan.

The Pond was built in the 1760s to provide power to drive the Slipper Mill, one of four working mills in Emsworth supplying meal for the Navy in Portsmouth. The tidal gates are pushed open as the sea breaks over the gates, and close as the tide turns, holding back the sea water which, in the past, powered the Mill. The tidal gates and sluice gate are both listed on the Southbourne Neighbourhood Parish Plan as important "Heritage Assets".

**Environmental objectives** include: to provide an environment that will encourage the growth of native plants and wild flowers and encourage wildlife, to use indigenous, salt resistant trees, shrubs, wild flowers and under planting; to enhance the natural beauty and views of the pond, including the removal of tired and overgrown planting where appropriate.

**Heritage objectives** include the maintenance and preservation of the sluice gate and tidal gates which are still operated and in working order.

Formal requirement for the CIO.  
Publicly available document –  
format defined by the Charity  
Commission.

- To receive the Annual Report of the Chairman and Trustees for the year ending 30 September 2025

*The Motion was approved*

# FINANCIAL ACCOUNTS – MOTION 3

SLIPPER MILL POND PRESERVATION ASSOCIATION CIO  
Registered Charity No. 1180249  
YEAR ENDED 30 SEPTEMBER 2025



## INCOME & EXPENDITURE

INCOME	2024/25	2023/24	Change on Previous	
			Year	
Subscriptions	1,922	2,003	(81)	
Donations	20,913	10,606	10,307	
Dolphin Quay Rent	2,000	2,000	-	
Gift Aid	2,685	639	2,047	
Sale of Bird Books, Notelets etc	43	30	13	
Bank interest	128	89	39	
M&G Dividend Income	2,125	443	1,682	
Annual Dinner income	3,634	3,011	623	
Other income (Broomfield donation)	320	350	(30)	
<b>Total Income</b>	<b>33,770</b>	<b>19,169</b>	<b>14,601</b>	

EXPENDITURE	2024/25	2023/24	Change on Previous	
			Year	
Broomfield Schools Photographic Competition	421	403	18	
Annual Dinner, Spring Talk, Summer Party, AGM costs	2,614	2,323	291	
Public Liability Insurance	520	400	120	
Legal Fees	-	-	-	
Planting	80	220	(140)	
Maintenance - infrastructure	43	42	1	
Maintenance - vegetation	1,442	554	888	
Printing/Stationery/Postage/Misc	124	174	(50)	
Signage	16	243	(227)	
Website	173	122	50	
Sluice Gate & Apron	-	305	(305)	
<b>Total Expenditure</b>	<b>5,433</b>	<b>4,785</b>	<b>647</b>	

**NET INCOME (EXPENDITURE)** 28,337 14,384 13,953

## BALANCE SHEET

CURRENT ASSETS	2024/25	2023/24	Change on Previous	
			Year	
Cash at Bank (Current Account)	1,618	1,074	544	
Bank Interest Account *	2,716	5,589	(2,872)	
<b>Total Current Assets</b>	<b>4,334</b>	<b>6,662</b>	<b>(2,328)</b>	

## INVESTMENTS \*\*

M&G Charifund <b>Restricted</b> Long Term Funds - year end value	29,462	7,042	22,420	
M&G Charifund <b>Unrestricted</b> Funds - year end value	18,284	17,217	1,066	
M&G Multi-Asset Fund <b>Unrestricted</b> Funds - year end value	10,204	-	10,204	
<b>Total Investments</b>	<b>57,950</b>	<b>24,259</b>	<b>33,690</b>	

Accounts Receivable (Debtors) - - -  
**Total Assets** 62,284 30,921 31,362

## LIABILITIES

Accounts Payable (Creditors)/Cheques in hand	-	-	-	
<b>Total Liabilities</b>	<b>-</b>	<b>-</b>	<b>-</b>	

**NET ASSETS** 62,284 30,921 31,362

\* Broomfield Schools Photographic Balance incl above 147 248 (101)

**M&G Initial Investment Values	No. Units	Initial Investment (£)
M&G Equities Investment Fund for Charities (Charifund) GBP Inc - <b>Restricted Long Term Funds</b>	1816.122	27,707
M&G Equities Investment Fund for Charities (Charifund) GBP Inc - <b>Unrestricted Funds</b>	1127.052	17,000
M&G Charity Multi Asset Fund GBP Inc - <b>Unrestricted Funds</b>	10301.85	10,000
<b>Total Invested Value</b>		<b>54,707</b>
<b>Overall Change in Investment Value</b>		<b>3,243</b>

Approved by the Trustees  
January 2026

To receive, and, if agreed, approve, the Annual Statement of Accounts for the year ending 30 September 2025

Financial accounts have been reviewed by the Trustees and Dominic Gibb-Gray.

# 2024-25 Income

<u>INCOME</u>	<u>2024/25</u>	<u>2023/24</u>	<u>Change on Previous Year</u>
Subscriptions	1,922	2,003	(81)
Donations	20,913	10,606	10,307
Dolphin Quay Rent	2,000	2,000	-
Gift Aid	2,685	639	2,047
Sale of Bird Books, Notelets etc	43	30	13
Bank interest	128	89	39
M&G Dividend Income	2,125	443	1,682
Annual Dinner income	3,634	3,011	623
Other income (Broomfield donation)	320	350	(30)
Total Income	33,770	19,169	14,601

- Membership fee increase in October 2024
- Very generous donors who wish to remain anonymous
- Gift Aid increased due to donations
- M&G Charifund investment account set up April 2024
- M&G Charifund Dividend Income
- Total income excl donations was £12,857

# 2024-25 Expenditure

<u>EXPENDITURE</u>	<u>2024/25</u>	<u>2023/24</u>	<u>Change on Previous Year</u>
Broomfield Schools Photographic Competition	421	403	18
Annual Dinner, Spring Talk, Summer Party, AGM costs	2,614	2,323	291
Public Liability Insurance	520	400	120
Legal Fees	-	-	-
Planting	80	220	(140)
Maintenance - infrastructure	43	42	1
Maintenance - vegetation	1,442	554	888
Printing/Stationery/Postage/Misc	124	174	(50)
Signage	16	243	(227)
Website	173	122	50
Sluice Gate & Apron	-	305	(305)
Total Expenditure	5,433	4,785	647
NET INCOME (EXPENDITURE)	28,337	14,384	13,953

- Insurance up 30%
- Vegetation Maintenance - £312 Skip hire (Oct 2024), £630 ash tree removal Dolphin Quay, £360 on east bank flail cutting, various tool repairs
- Planting – 2x Sea Buckthorn
- Net Income of £28,337

# 2024-25 Balance Sheet

<u>BALANCE SHEET</u>	<u>2024/25</u>	<u>2023/24</u>	<u>Change on Previous Year</u>
<u>CURRENT ASSETS</u>			
Cash at Bank (Current Account)	1,618	1,074	544
Bank Interest Account *	2,716	5,589	(2,872)
Total Current Assets	4,334	6,662	(2,328)
<u>INVESTMENTS **</u>			
M&G Charifund Restricted Long Term Funds - year end value	29,462	7,042	22,420
M&G Charifund Unrestricted Funds - year end value	18,284	17,217	1,066
M&G Multi-Asset Fund Unrestricted Funds - year end value	10,204	-	10,204
Total Investments	57,950	24,259	33,690
Accounts Receivable (Debtors)	-	-	-
Total Assets	62,284	30,921	31,362
<u>LIABILITIES</u>			
Accounts Payable (Creditors)/Cheques in hand	-	-	-
Total Liabilities	-	-	-
<u>NET ASSETS</u>	62,284	30,921	31,362
* Broomfield Schools Photographic Balance incl above	147	248	(101)

# M&G INVESTMENTS

**M&G Initial Investment Values	No. Units	Initial Investment (£)
M&G Equities Investment Fund for Charities (Charifund) GBP Inc - Restricted Long Term Funds	1816.122	27,707
M&G Equities Investment Fund for Charities (Charifund) GBP Inc - Unrestricted Funds	1127.052	17,000
M&G Charity Multi Asset Fund GBP Inc - Unrestricted Funds	10301.85	10,000
Total Invested Value		54,707
Overall Change in Investment Value		3,243

- We now have an investment policy. The Trustees have agreed to invest in 2 specific charity funds managed by M&G as being suitable for Charities:
  - (i) M&G Equities Investment Fund for Charities (Income units) (“Charifund”)
  - (ii) M&G Charity Multi Asset Fund (Income units)
- Funds provide income (dividends) as well as growth. Capital may go up or down.
- Note restricted (endowment) funds vs unrestricted funds above.
- Guidelines:
  - Bank “Cash” - £3,000 – for day-to-day administration
  - M&G Charity Multi Asset Fund – around 20% of total assets
  - M&G Charifund – balance

# ANNUAL FUNDING OF THE SMPPA

- £2,000 in membership fees (+ Donations & Gift Aid)
- £2,000 per annum from Dolphin Quay rent
- M&G Dividends (£2,000?)
- Annual Dinner (£1,000 approx NET income)
- Barclays savings account interest
- Total average income approx £7,000 pa
- Total average costs (excluding any projects) approx £2,500.

# FUTURE “EXTRAORDINARY EXPENDITURE”

## **Known / Committed 2026 Extraordinary Expenditure**

- Structural Survey and exploratory drilling of south bank - £2,000
- Phragmites Reeds - £1,020 (approx)

## **Unknown Future Expenditure**

- Repair of South Bank & Sluice apron undercutting
- Repair of Tidal Gate Wall
- Dolphin Quay ??

# LONG TERM ENDOWMENT (RESTRICTED) FUND

- This is a start to fix the long term funding of the Charity/CIO.
- We have taken on the commitment to look after the Pond effectively in perpetuity.
- In order to match our long term commitments we are trying to build up our long term funds.
- Very grateful to our anonymous donors who share this view.
- Should you share this vision and wish to add to this fund we would be very grateful. Just mark your donation Long Term Fund and we will do the rest.

# FINANCIAL ACCOUNTS – MOTION 3

To receive, and, if agreed, approve, the Annual Statement of Accounts for the year ending 30 September 2025

*The Motion was approved*

# ELECTION OF TRUSTEES

Maximum term for a Trustee is 9 years.

1/3 of Trustees must resign at every AGM.

Currently 5 Trustees

- *Jo Greenfield (Chairman) (since 2019)*
- *Simon Dwyer (2019)*
- *Simon Eveleigh (2019)*
- *Jim Hailstone (2022)*
- *Christine Hows (2025)*

No forthcoming replacement for Jo Greenfield. If none found, according to the Constitution, she must resign for 12 months on 25 October 2028, before possible reinstatement.

# RE-ELECTION OF TRUSTEES – Motion 4

**4 (i) Jim Hailstone** resigns by rotation offers himself for re-election

*The Motion was approved*

**4 (ii) Christine Hows** resigns by rotation and offers herself for re-election

*The Motion was approved*

# ELECTION OF NEW TRUSTEES

## Motion 4

Proposal for election of new Trustee

**Susan Dibden (Slipper Road)**

*The Motion was approved*

# **SMPPA CHAIRMAN'S REPORT**

## **HIGHLIGHTS OCTOBER 2024 TO DATE**

More than 5 months since Year End

Report covers financial year and YTD

# MEMBERSHIP

- Christine Hows new Membership Secretary
- First Membership Fee increase for 20 years started October 2024 – relatively smooth
- 136 members at Year End
- Numbers stable
- Brenda Scott and Carol Common canvassed new members in the run-up to the dinner
- Please encourage new members!

# Questionnaire results

## lowest score (out of 5) first

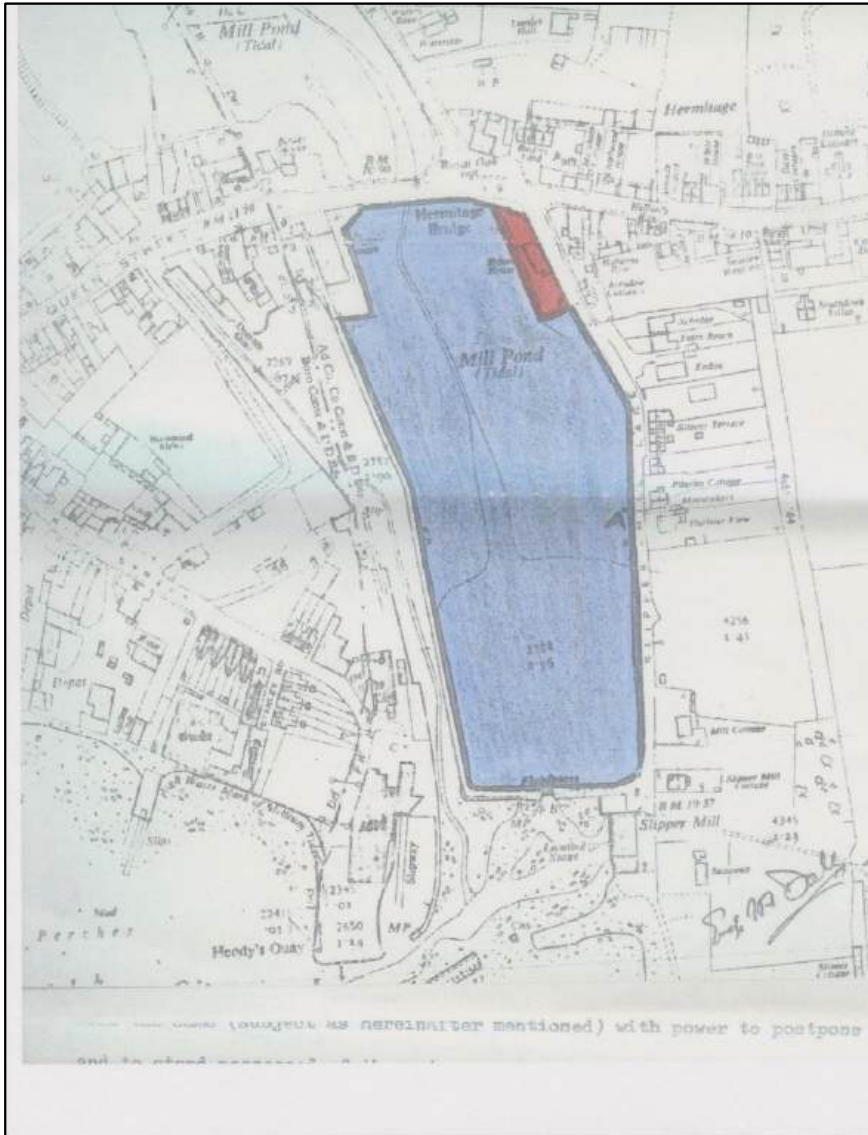
I think the planting is good at Dolphin Quay	3.4
I know who the current Trustees are and what they do	3.7
I think the infrastructure at Dolphin Quay is well managed (footpath, banks etc)	3.7
I am familiar with the SMPPA website <a href="http://www.smppa.org.uk">www.smppa.org.uk</a>	4.0
I think the SMPPA generally takes into consideration any feedback from Members regarding the maintenance of planting	4.2
I think the variety of plants is generally good around the Pond	4.4
I am generally satisfied with the Pond and Dolphin Quay	4.5
I think the infrastructure around the Pond is well managed	4.5
I think that the SMPPA promotes and encourages wildlife as much as it can	4.5
I believe that the planting is well maintained and managed.	4.5
I am generally satisfied with the SMPPA	4.6
I think that the SMPPA and the Slipper Mill Pond are well managed	4.7
Communication (newsletters, email updates etc) are of appropriate frequency, content and timely.	4.7
I read the newsletters	4.8

# Questionnaire results

- So far 30 responses out of 136 members (22%)
- Lots of helpful comments to help the Trustees prioritise areas
- Interesting that SMPPA “community” is important to people, as well as wildlife, landscape etc
- Wide range of opinions about planting around the Pond.
- General consensus that Dolphin Quay could be improved.
- Feedback is important so we know what YOU think
- ***YOUR FEEDBACK MATTERS!***

Form is still available online (see newsletter for link) – please complete it!

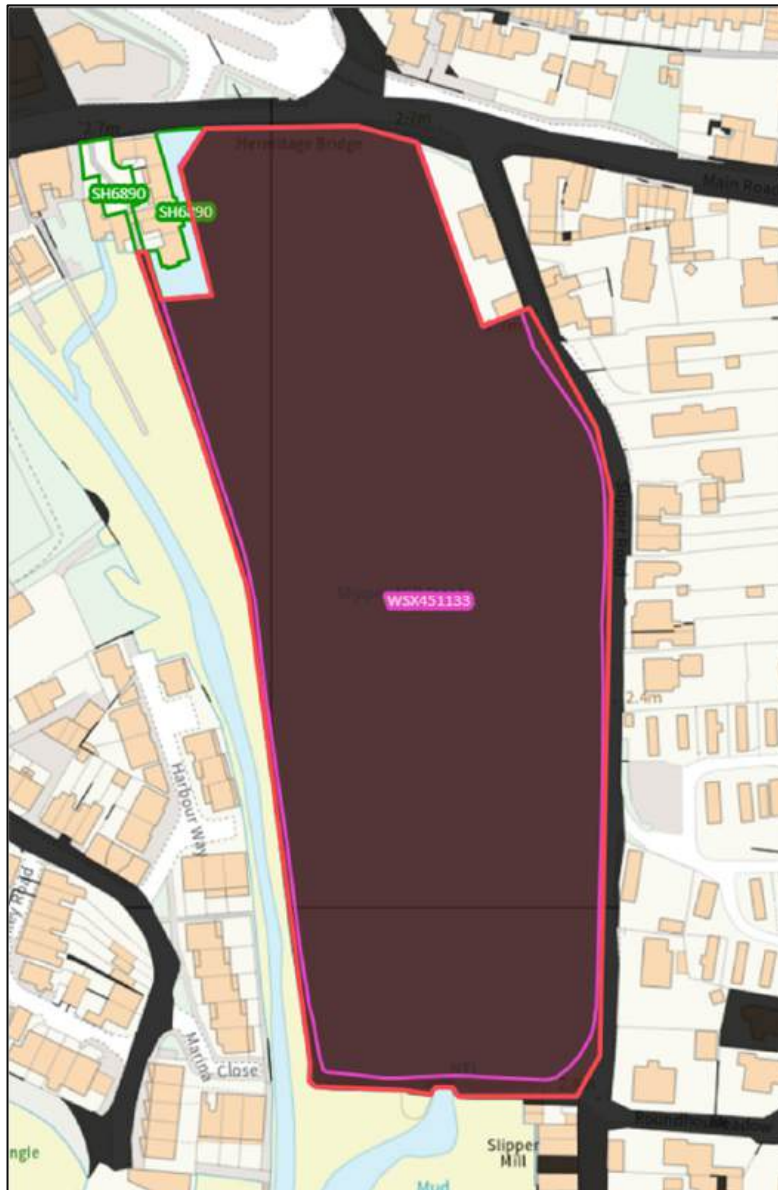
# OWNERSHIP - POND



- Legal paperwork completed 22 April 2022
- Land Registry (after losing initial application) have recently approved the initial transfer (see LHS).
- Initial transfer is just the water and not the banks or infrastructure.
- Important that we try to ensure that issues about land ownership and responsibility (or other potential legal and administrative complications) do not arise in the future.
- We will go back to Land Registry to appeal for expansion of area to include all the parts the SMPPA looks after.

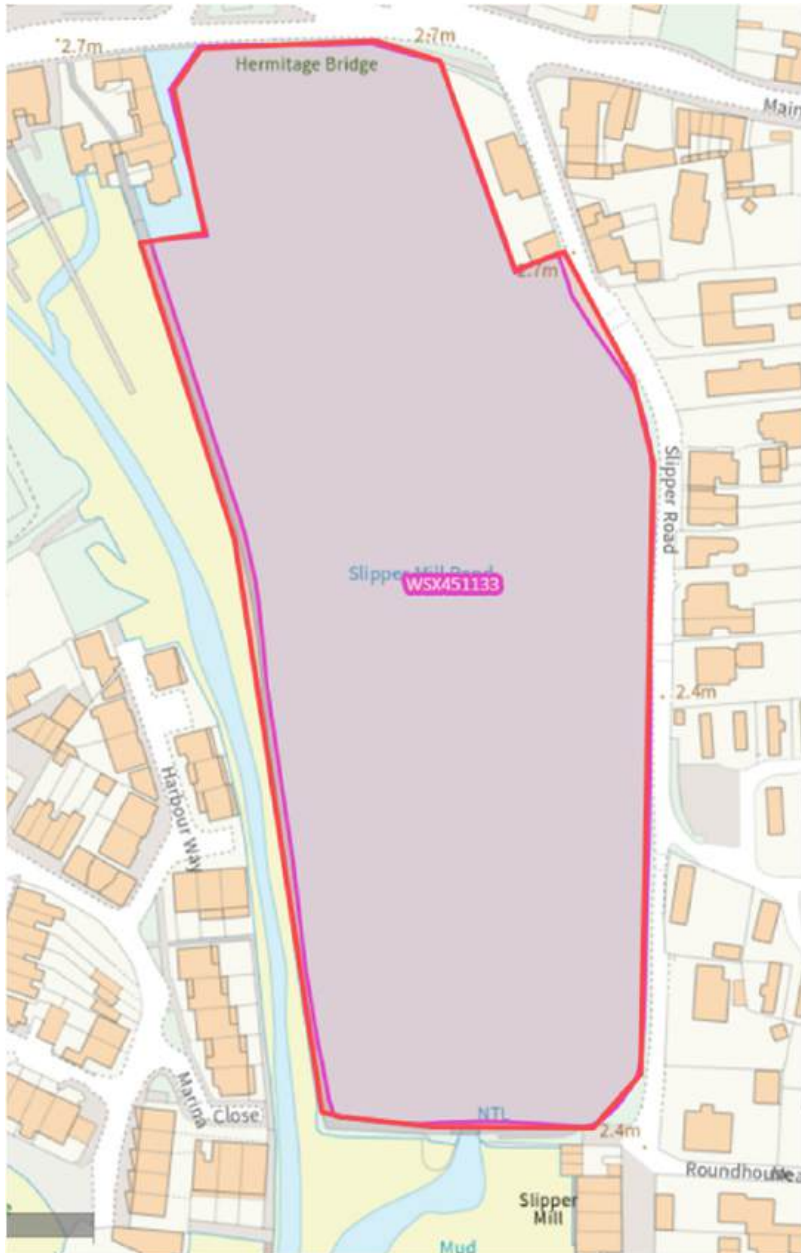
*It was noted that this ownership change is different to the Dolphin Quay gift of land from the Wardle family, which is fully completed.*

# OWNERSHIP BOUNDARY



- Pink/purple line encloses the “land” (Pond!) now owned by the SMPPA.
- Black areas show unregistered land.
- Red line shows land we **believe the SMPPA should own, reflecting what we actually look after.**
- Note Chequers Quay in NW corner owns part of Pond.

# OWNERSHIP CHALLENGE



## BUT

- Solicitor (Sarah Humphrey at Trethowans) thinks it will be difficult to get all the additional land without going down the “adverse possession” route which will cost.
- South bank land and footbridge in particular (see picture) could potentially remain unregistered.
- Help from Alex-Gibb Gray, SMPPA member who has Land Registry experience – thank you.
- Next steps currently under discussion. No guarantees.

*Members suggested that the “adverse possession approach should be avoided if at all possible*

# 2024-25 ACTIVITIES

- Workparties - October 2024 was last large group workparty – replaced by flail-cutter tractor in 2025. Jobs now done by smaller groups (easier to manage and less physical work)
- Phragmites Reeds treatment
- Vegetation maintenance (main expenditure on flail mulching and Dolphin Quay Ash Tree Removal)
- Planting of Sea Buckthorn trees in autumn 2025
- Infrastructure maintenance (no major costs)
- Dolphin Quay hemlock water dropwort removal
- Annual Dinner in November 2024 (and 2025)
- Broomfield Schools Photographic Competition – April/May 2025
- Summer Garden Party – July 2025

# ACTIVITIES SINCE SEPT 2025 YEAR END

- New Coir Rafts / Fish Feeding Stations
- South Bank Survey received. Exploratory drilling due late March.
- Tidal gates work.
- Dolphin Quay rubbish removal and digging up of hemlock water dropwort.
- New drain in SE corner.
- Questionnaire to Members.

# EVENTS

# ANNUAL DINNER

## November 2024 & 2025



- Emsworth Sailing Club – November 2025 was the 3<sup>rd</sup> year
- November 2024 – organised by Maire Park – thank you
- November 2025 - Brenda Scott & Carol Common organised Raffle and Prizes – thank you. David Richards conducted the Auction – thank you.

- Activities:** Raffle, “Guess the Weight”, Quiz, Poetry Competition, Auction (2025 first time), Shanty Singers (“Estuary Men” in 2024, Emsworth Sailing Club in 2025)
- November 2025 was one of the best?
  - Always looking for help with Raffle preparation (September onwards)!

# ANNUAL DINNER – Last 2 years

	Nov 2024	Nov 2025
No. Tickets Sold	74 @ £38.50 each	66 @ £40
No. Donations from local businesses for Raffle	14	25 !!!
Takings from Raffle & “Guess the Weight” of the Hamper	£689	£616
Auction	n/a	£500
Net Profit (after small dinner mark-up minus staff tip, Shanty Singer drinks etc)	£1,118	£1,337
Activities	Raffle “Guess the Weight” Quiz (photos around the Pond) Poetry Competition “Estuary Men” Shanty Singers	Raffle “Guess the Weight” Auction (no Quiz)  Poetry Competition “Emsworth Sailing Club” Shanty Singers

# ANNUAL DINNER

## Help Needed!

Brenda Scott & Carol Common are happy to help again, canvassing local businesses and putting together the raffle bags.....

# BUT

They would like help with:

- Putting together the letters and leaflets to deliver to local businesses and residents
- Delivering the envelopes and explaining to businesses who we are and what we do
- Organising and packing up the Raffle bags and Hamper “Guess the weight”

Help and ideas for activities on the night also much appreciated!

*Jenny Hailstone kindly volunteered to help Brenda and Carol.*




# BROOMFIELD SCHOOLS PHOTO COMPETITION - 2025


**2025 Prize Winners**

In 2025 we received 97 photos from 50 pupils across the 6 participating schools. As ever, the standard was excellent, making the judges' job very difficult!


In addition to the 8 overall winners (1 for each subject per year group), the judges awarded 16 "Certificates of Merit".




2025 Overall Winning Photo - Local Nature  
"Love Is Everywhere" by Mia Forbes - Year 3 -  
Emsworth Primary School





2025 Overall Winning Photo - Any Subject  
"Dazzling Dove" by Agatha Benini Wraight -  
Year 3 - Southbourne Junior School




**Year Group Winners - "Local Nature"**  
Year 4: "Where's my Panda?" - James Chaffler - St James  
Year 5: "Bottoms Up!" - Florrie Seery - St James  
Year 6: "Juicy Fruits" - Charles Harman - Southbourne










**Year Group Winners - "Any Subject"**  
Year 4: "Inside the Hive" - Alex Turner - St James  
Year 5: "PeliCAN you Believe it" - Florrie Seery - St James  
Year 6: "Echoes of the Past" - Charles Harman - Southbourne



- Started in 2012 – Maurice Broomfield legacy
- Pupils from years 3-6 of six local primary schools can submit one photo in each of two categories: Local Nature and Any Subject.
- In addition to the 8 overall winners (1 for each subject per year group), the judges awarded 16 "Certificates of Merit".
- Received 97 photos from 50 pupils (previous year was 115 photographs entered from 61 pupils)

# BROOMFIELD SCHOOLS PHOTO COMPETITION - 2025



- Judging was carried out by Jonathan Stamper, Gilbert Park, Claire Starling - thankyou
- Jo liaised with schools and pupils
- Maire Park did photo mounting/ display
- Co-op no longer providing refreshments
- All pupils get their printed/ mounted photos

All photos are exhibited in the community centre as part of the Emsworth Arts Trail (early May bank holiday)  
*Do come along to see them!*

# BROOMFIELD SCHOOLS PHOTO COMPETITION – 2026 UPDATE

- 2026 – Helen Yoward and daughter Freya have taken on the organisation, photo printing and mounting – thankyou.
- Competition is very popular with the 6 participating primary schools.
- Helps to involve the SMPPA in the local community.
- Supported by Maurice's son Nick Broomfield who came to the prize-giving in 2025 and is coming again this year.
- Costs approx £400 pa in cash prizes and materials. Nick has topped up funds for the last 2 years (2026 is funded).

# SUMMER GARDEN PARTY

## 27<sup>th</sup> July 2025

- Hosted at Slipper House again by Claire Starling & Simon Dwyer – thankyou
- Not so many as usual year – possibly due to Women's Football Final (Euro 2025), Grand Prix AND the KQMC party – all on the same day!
- Those who went found it a most pleasant way to spend a Sunday afternoon as usual.

# COMMUNICATIONS

# COMMUNICATIONS

- Newsletter twice a year – now printed professionally (trying to reduce the number of printed copies)
- Presentations/updates at AGM & Annual Dinner
- Website [SMPPA.ORG.UK](http://SMPPA.ORG.UK) – very comprehensive
- Instagram account [@slippermillpond](https://www.instagram.com/slippermillpond)
- New email hosting for [info@smppa.org.uk](mailto:info@smppa.org.uk) means that official SMPPA correspondence does not come from personal emails.

# WEBSITE & INSTAGRAM



## Our Pond - a Haven for Wildlife in Emsworth

Welcome to the Slipper Mill Pond Preservation Association (SMPPA). We are a registered charity which exists to preserve and protect the Slipper Mill Pond in the parish of Southbourne on the eastern edge of Emsworth. The SMPPA was founded in 1966 and is made up of volunteers, Members and Friends of the SMPPA who are responsible for the Pond's day to day management and maintenance.

The Pond is a saline lagoon, a very rare wildlife habitat, both in the UK and Europe. The combination of sea and fresh water provides a unique brackish water environment; it has been recognised as a [Local Wildlife Site](#) and [Site of Nature Conservation Importance](#) and home to many special species. It is inside the Chichester Harbour National Landscape (formerly Area of Outstanding Natural Beauty or AONB) and is part of the proposed Strategic Wildlife Corridor from Hermitage to Westbourne. The tidal gates and sluice are listed on the Southbourne Neighbourhood Parish Plan as important 'Heritage Assets'.

The Pond supports a rich invertebrate fauna including two protected species - the [Tentacle Lagoon Worm](#) and [Starlet Sea Anemone](#). It also has an interesting species of tube worm, which leaves tube-like casts, along with over [40 bird](#) and [160 plant](#) species, and several [fish](#), particularly the grey mullet, which can be present in large numbers.

The pond covers an area of around 7 acres (3 hectares) and was built in the 1780s to provide power to drive the [Slipper Mill](#), one of four working mills in Emsworth supplying meal for the Navy in Portsmouth. The [gate gates](#) are pushed open as the sea breaks over the gates, and close as the tide turns, holding back the sea water which, in the past, powered the Mill.

The mill was in constant use until the 1960s when it was sold. The Pond itself was bought by 33 local residents in 1980 off the then owners Slipper House, in order to prevent the Pond from being developed. In April 2022 the Pond was gifted to the SMPPA who now owns and continues to manage the Pond. [The article in THE EMS newspaper](#) explains the background in more detail.

- The Pond is a designated Local Wildlife Site and is privately owned by the SMPPA Charity. **SWIMMING IN THE POND AND BOATING OF ANY KIND IS NOT ALLOWED.** Anyone doing so will be asked to move along.
- We request that you **DO NOT CLIMB ON OR JUMP FROM THE FOOTBRIDGE AND SURROUNDING INFRASTRUCTURE** as these are important historic Heritage assets and are not designed for this purpose.
- **FISHING** - our fishing policy can be found on signs around the Pond, and also on our [Fish, Bats & Mammals page](#)
- Useful contact numbers for Police, Reporting Wildlife in Distress, Pollution etc can be found [here](#) and also on our notice board on Slipper Mill

## News

### Tidal Gate Opening Dates - Pond Draining

In general, we chain back the tidal gates to drain the Pond over spring tides in the winter months (late September-February inclusive). If there are high water levels up river, this is particularly helpful to get rid of any silt. It also enables up-stream valves and culverts to be cleared or serviced (eg on Peler Pond), and allows access to inspect the sluice and gates. It is also a good opportunity to remove litter, and carry out any repairs or work that needs doing on the water's edge.

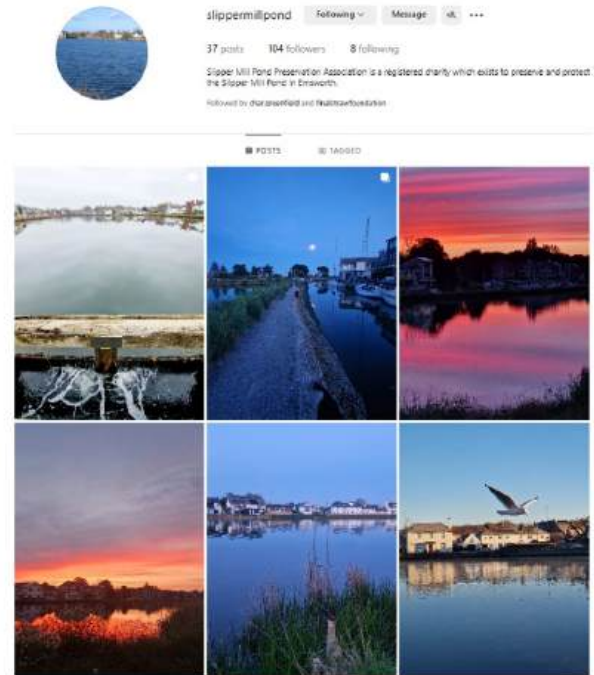
We are now chaining back the gates for longer periods at the request of the Chalk Stream Rivers Project. By leaving the Slipper Mill Pond tidal gates open for longer, there is more time and opportunity for the fish, particularly trout and eels, to swim from the sea into the Pond, and from there make their way up the River Ems to spawn (these fish spawn from November to February). Research carried out elsewhere by a company called [FishTact](#) found that one gate held open for just 25 minutes longer resulted in a ten-fold increase in the number of eiders moving upstream through the tidal gate.

More details at [www.wildtrout.org/content/trout-lifecycle](http://www.wildtrout.org/content/trout-lifecycle) and [www.west.org.uk/our-rivers/the-river-ems](http://www.west.org.uk/our-rivers/the-river-ems)

We try to avoid draining the Pond from late February through early September due to the need to protect the wildlife during the breeding season. We therefore only chain open the gates in the spring or summer when we consider it to be an 'emergency' situation.

A link to the Westbourne Gauge historic river level data is [here](#).

[www.smppa.org.uk](http://www.smppa.org.uk)



[instagram.com/slippermillpond/](https://www.instagram.com/slippermillpond/)

- “Search bar” to assist with research
- Useful contacts, Historical Timeline
- Events dates & information
- Aim for it to be a comprehensive information source

etc etc

# WHATSAPP GROUPS

- 3x WhatsApp Groups:
  - “Pond Life” - for reporting anti-social behaviour – 53 subscribers (not all are members)
  - “Work Party” - for work parties, usually at short notice as required – 13 subscribers
  - “Dolphin Quay” - for those interested in happenings at Dolphin Quay - 19 subscribers
- LET US KNOW if you'd like to join any of the WhatsApp groups!



# SIGNAGE



Additional information board on Slipper Mill – do take a look!

The 2 yellow warning signs on the beam above the Tidal Gates have been renewed (they had been ripped off).

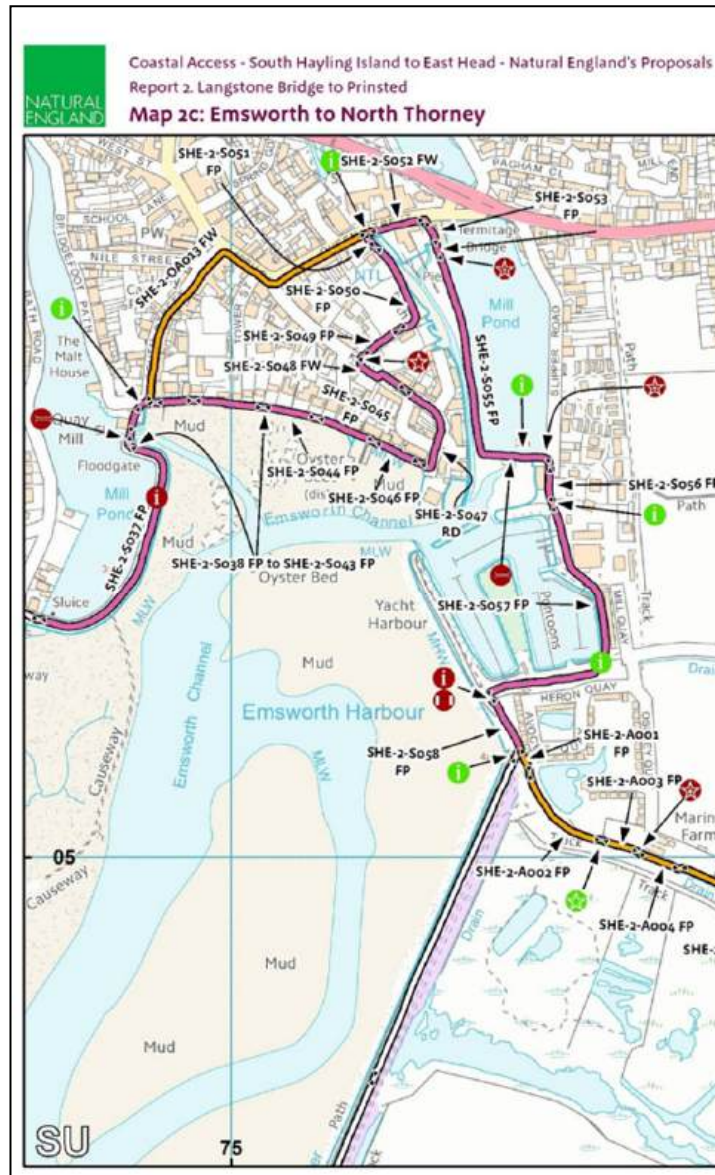


# ANTISOCIAL BEHAVIOUR

- 30 April/1 May 2025 - Anti-social behaviour resulted in a boat being dragged from the sea over the bank into the Pond.
- Youths were also trying to rock the footbridge. Prikka strip not effective as ripped off.
- Some boat owners have now moved their boats elsewhere as youths were climbing on them.
- Bad behaviour subsided after this date. We suspect Police may have taken some action.
- There are 53 people in the “Pond Life” whatsapp group, which is used to communicate anything suspicious.
- Footbridge rails are slightly loose and need repair – Simon Eveleigh and Mike Oliver are formulating a plan. Difficult to do any work when there are high water flows from up-stream as need access from below.

# DOLPHIN QUAY

# KING CHARLES III COAST PATH



- Path now officially open and signage is up.
- Goes through Dolphin Quay and along the west and south banks of the Pond
- Footpath resurfacing required – chasing CHC as not done since 2022.
- Monitor footfall?

# DOLPHIN QUAY - OVERVIEW



- Don't forget we own all the land alongside DQ, which includes the recently-named KCIII coastal path – ie SMPPA is not just the Pond!
- Valuable income from boatyard for boat access - £2,000 pa – helps support the Pond
- 2025 was first year of actively doing anything since land gifted to us in 2020 – partly precipitated due to health & safety concerns with new KCIII Coastal Path imminent
- Monitoring “dangerous” trees
- Footpath “shifting” east towards the water – need to trim western side to encourage walking there
- Erosion of banks by wave action
- Damage to bank caused by gang planks

# DOLPHIN QUAY – ACTIVITIES



*2 ash trees with ash dieback*



*Removing the tree trunks*



*Free firewood for local residents*



*Mooring post trip hazards hidden in the grass*



*Simon Eveleigh removing a post using a farm jack*



*Post removed – 6ft long!*

- 2 large ash trees overhanging footpath cut down (cost £630). May need to remove more (a small one fell across the path in December 2025)
- Removed buried “trip hazards” such as mooring posts (see photos – thank you to Simon Eveleigh)
- Boat Gangplanks now removed from bank where rubbing against it
- Ongoing removal of hemlock water dropwort which is large and invasive. Also Tree Mallow if it gets large.
- New DQ WhatsApp group to communicate activities
- Strange things happen without our knowledge – eg planted Christmas tree appeared (and disappeared) overnight!

# DOLPHIN QUAY - THANKS



## THANKS TO

- Jonathan Robertson
- Catherine\* (and Tim) Jones
- Caroline & David Richards
- Barbara Melrose
- Alex & Sally Wardle
- Martin Perry\*
- Jim & Jenny Hailstone\*
- Simon Eveleigh



\* Particular thanks to Catherine Jones and Martin Perry for helping with digging up hemlock water dropwort, general clearance of twigs etc and collecting rubbish, and to Jim & Jenny Hailstone for taking rubbish etc to tip.

**INFRASTRUCTURE &  
VEGETATION  
MANAGEMENT -  
THE POND  
(Jim Hailstone)**

# POND INFRASTRUCTURE & VEGETATION MAINTENANCE OCTOBER 2024 TO DATE

- Tidal gates work
- Survey of tidal gate west wall crack
- Survey of slippage on South bank to assess extent of problem
- Sluice Apron potential undercutting (work will be linked to south bank)
- New drain in SE corner
- Footbridge posts repair (pending agreed method)
- Slipper Road Vegetation Maintenance, including Phragmites

# TIDAL GATES – NEW CHAINS



The old chains were becoming increasingly heavy as they were very rusty and encrusted with sea creatures.

In November, Jim Hailstone and Fraser Dibden replaced the chains which are now much more manageable.



# TIDAL GATES – LEAKAGE



- The Tidal Gates are leaking noticeably
- In December we attempted to remedy this by fitting new rubber seals to the gates and using waterfall foam to fill any gaps.
- Limited success as the middle post is loose and needs fixing securely.
- We are hoping to have another try later in the year when the River flows are less.

# TIDAL GATES – LEAKAGE



The pictures show Simon Eveleigh and his friend Richard Binks undertaking the work.

While they were there, Richard retrieved a BMX Bike from the Pond and we left it by Slipper Mill.

It is has subsequently disappeared, hopefully to a good home!



# TIDAL GATE WEST WING WALL



- Markers have been monitored for over 20 years (see photo approx 2003)
- Workparty filled higher gaps in 2022

# TIDAL GATE WEST WING WALL



- Upper section appears unchanged.
- Crack now appears to be bulging further down.
- May require pinning / a metal strap (subject to David Shields survey/ exploratory drilling)

# SOUTH BANK CRACK - SLIPPAGE



*Monitoring the gap*

- Markers were placed in August 2023 on the bank at the southwest corner where the boats are moored.
- Monitoring for any movement (some slippage) and also looking at other areas.
- Have received a structural survey from David Shields (£895) who recommends exploratory drilling (£1092) to understand the bank structure before formulating a plan.
- Contractor to do trial holes late March
- Boat ladder fixings are possibly causing damage to the gabions / bank. Access from here is not approved or paid for so the fixings are unauthorised. We are in contact with CHC Moorings (moorings are private) who agree.

# SLUICE APRON UNDERCUT



- When repaired in February 2022, undercut was not filled.
- Warning markers to be fitted to highlight edges of sluice apron (for boat users)
- Infill work on hold (not costed), as logical to infill at same time as south bank slippage.

*Monitoring the undercut*

# SE CORNER PUDDLE - BEFORE



- Pond bank is low by kissing gate and large puddle forms that does not drain.
- Jim Hailstone & Rob Turner fitted new drain and built up bank
- Planning to get some aggregate to raise parking area by main gate

# DRAIN IN SE CORNER – MARCH 2026



# WORK PARTY - OCT 2024 – THE LAST TIME??



# EAST BANK FLAIL MULCHING – July 2025



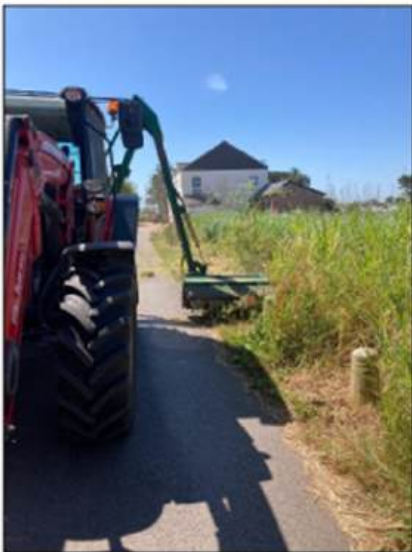
July 2025 was first time we hired a contractor to flail cut the east bank.

Jim Hailstone and Sharon Corbett clear and mark around the plants and areas to be avoided

Christine Hows informs Slipper Road users to move their parked cars on the day

Jim Hailstone marshals the tractor on the day

Small workparty tidies up the road afterwards



***East Bank Flail Cutting by Nigel Jordan (Agricultural Contractor) – July 2025***

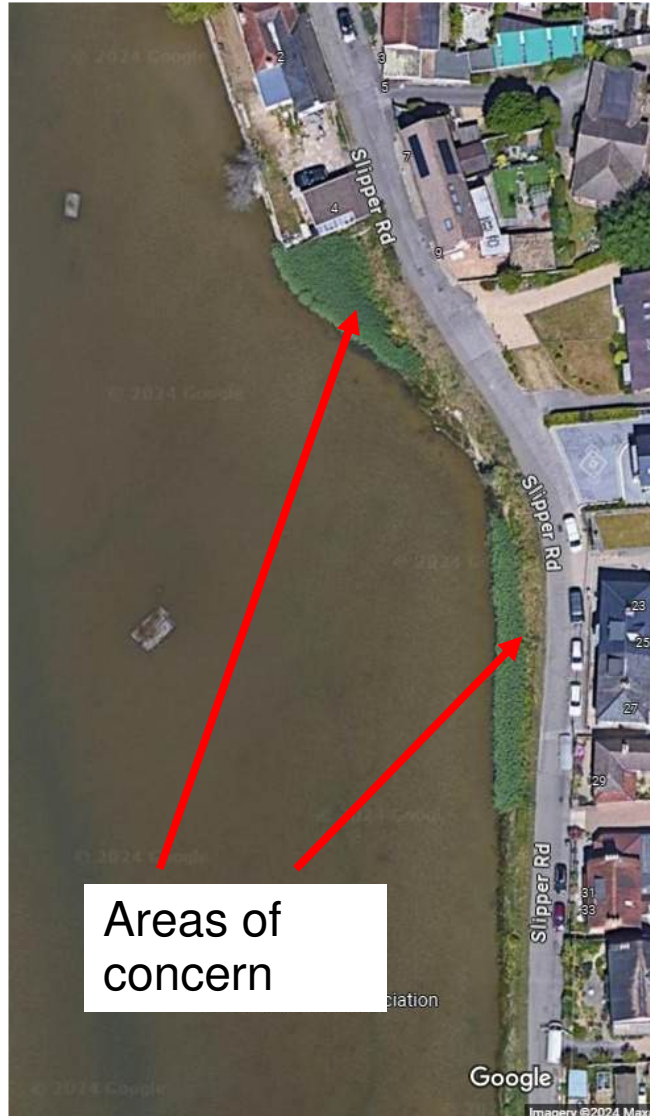
*Top left - Sharon Corbett  
Top Middle – Jim Hailstone  
Tractor with Flail-Cutter/Mulcher*



# EAST BANK FLAIL MULCHING

- Flail-cutter (£360 per visit) mulches the arisings, meaning that they do not need to be disposed of separately
- Hugely reduces the time, effort and physical hard work of strimming and removal, including multiple tip runs (or the hire of a skip)
- No longer reliant on SMPPA tools which can be unreliable and not fit for purpose
- This new approach was considered a success in July so another was carried out in November 2025
- Jim Hailstone & Sharon Corbett ensure that young plants and trees are not damaged by strimming around them in advance. Jim supervises the contractor on the day.
- Cuts planned twice a year going forward.
- Means that we no longer require large workparties - any jobs are carried out by smaller groups as and when required.
- If you are physically fit and would like to volunteer to join smaller workparties, please email us and we will add you to the WhatsApp group

# PHRAGMITES REEDS



- Extensive investigations done by the Reeds Subgroup (Rob Turner, Leigh Charlton, Tim Hollins, Trena Nicholls and Jane Smith – thank you)
- Numerous meetings with various contractors to explore options (Jim Hailstone and Rob Turner)
- Trustees agreed to go forward with using a licensed systemic, non-toxic herbicide (chosen because it doesn't harm wildlife) to reduce the reed areas in the northernmost and middle sections (a method used by the SMPPA several years ago).
- Reed management is ongoing. The Trustees are committed to controlling the reeds.
- Underlying premise is to do no harm to the Pond or its environs (in consultation with EA)

# PHRAGMITES REEDS

- Approval received from Environment Agency for an external contractor EnviroAqua to undertake the work.
- It requires a cut back of the selected areas in advance of EnviroAqua attending (carried out by SMPPA work party).
- Reeds were cut back in late September 2025, with the herbicide applied by EnviroAqua in early October (as advised by EA). Cost £1,020.
- Monitoring any future growth.
- Treatment changes and must be approved by the EA every year.
- Southern section of reeds (left untouched) is now expanding south fairly quickly.
- More details on our website under “planting”.

# WORKPARTY THANKS TO

- Rob Turner
- Fraser Dibden
- Leigh Charlton
- Keith Nicholls
- Martin Perry
- Clive Johnson
- Tim Hollins
- Jenny Hailstone
- Maisie the Dog



**Any Questions  
before we continue?**

# **WILDLIFE INITIATIVES**

# WILDLIFE INITIATIVES

- Strong Links with Sarah Hughes through The Chalk Stream Resilience project and the River Ems (Western Sussex Rivers Trust). Various meetings.
- Now chaining the gates back for a week at a time October-February, to encourage fish to spawn upstream
- New coir rafts donated by CDC
- Nesting tubes on bird rafts - donated by Dave Gattrell from Peter Pond. Well used in 2025.
- Planting of Sea Buckthorn Trees
- Removal of invasive species such as hemlock water dropwort
- Study of Lagoon Cockles and other molluscs in the Pond by Zoologist Bas Payne
- Meetings with Pedro Perez who records wildlife sightings on i-Record

# CHAINING BACK THE GATES FOR THE FISH



- By chaining back the gates the pond becomes tidal and helps clear silt, particularly from Peter Pond (particularly when there are high river flows) .
- Historically, the main reasons for chaining them back were to enable us to carry out work around our own Pond, and also at Peter Pond, where Dave Gattrell spends most weekends clearing and managing the vegetation.
- Now chaining back the gates for longer periods over the winter months in order to encourage the fish (primarily trout) to spawn upstream; these fish spawn from November to February.

# FISH AND THE RIVER EMS



- Gate chaining back at the request of the Western Sussex Rivers Trust (Chalk Stream Resilience Project Officer Sarah Hughes). Project is working to restore 3 precious chalk rivers - the Ems, Hambrook and Lavant.
- Focus on improving water quality, making the streams more resilient to high and low flows, and enabling habitats and species to thrive.
- Slipper Mill Pond is a vital part of the River Ems Wildlife Corridor which runs from Hermitage to Westbourne.
- By having the tidal gates open for longer, there is much more time and opportunity for the fish, particularly trout and eels, to swim from the sea into the Pond, and from there make their way up the River Ems to spawn.



# 3x COIR “RAFT” - FISH REFUGE ISLANDS



*Making up and Preparing the rafts*



*Ready to launch!*



*Towing the new rafts out - moored with a sand bag at each corner*



*How the rafts should look as the vegetation grows*

- “Fish refuge islands” rather than “bird rafts” - primarily useful as feeding stations and shelter for fish
- Donated by Chichester District Council – total value £4,140 (initiated by Sarah Hughes from the Western Sussex Rivers Trust – Thankyou)
- Partly as a “thank you” for us chaining back the gates for longer periods during the winter to enable fish to spawn up the River Ems
- Fitted by AquaMaintain in December 2025
- Rafts have been planted with saline tolerant plants
- 1 re-sited itself further south when it “broke free” when we chained back the gates
- We look forward to seeing how they grow!

# DUCK NESTING TUBES



- Nesting tubes on bird rafts - donated by Dave Gattrell from Peter Pond. Well used in 2025. Recently refurbished and re-sited by Simon Dwyer (thank you).
- The tubes are now part of a national monitoring scheme BASC (British Association for Shooting and Conservation), with each tube having an ID plate.

*Mike Hollis noted that a bird raft has “appeared” on the shore at the end of Warblington Road, and may be of interest to the SMPPA if not claimed. JG will follow up.*

# PLANTING – SLIPPER ROAD



- Last planting was in autumn 2025: 2 Sea Buckthorn\* Trees in SE corner
- Thankyou to Sharon Corbett and Catherine Jones
- Goat willow tree in SE corner is dying sadly
- We are removing hemlock water dropwort as it appears in spring (large & invasive, with little wildlife benefit)
- Sharon Corbett is now back to (expert) pruning and tending to plants along Slipper Road – thank you

\* Some members have enquired about sea buckthorn being “invasive” as the internet often infers. There have for many years been sea buckthorn trees planted in places along Slipper Road. One still remains just to the south of the entrance to the caravan park, but we have lost 3 or 4 in the last few years. These are attractive structural trees with light foliage, and berries which are good for wildlife. We have never had a problem with them being invasive; this usually occurs in "dune" areas which are different to the Pond banks. It is relatively easy to remove any shoots, should they appear.

# LITTER REMOVAL



- Results of recent litter pick by Jonathan Stamper using waders - mainly plastic and glass bottles, a fire-extinguisher, snorkelling mask, fender, dog bowl etc

- We are very grateful to those members who regularly collect litter from around the Pond and Dolphin Quay – it does not have to be part of an organised workparty.
- Please take care near the water's edge and do not venture into the Pond without proper equipment as the mud is deeper than it appears.

# I-RECORD WILDLIFE



- Meetings with Pedro Perez a wildlife enthusiast from Fareham, who enjoys visiting this area.
- He primarily focuses on birds, butterflies, moths, beetles and dragonflies but records anything he sees on [www.iRecord.org.uk](http://www.iRecord.org.uk).
- He and his colleague Megan from Hampshire Wildlife Trust set a moth trap at Dolphin Quay on 24th September – he was hoping for 10 species and got 11 (at what is a quiet time of the year for moths).
- He has made a lovely video which is available on Instagram and often posts on facebook.
- No other formal wildlife monitoring by local residents to our knowledge – mostly bird and fish “observations” (not recorded).

# STUDY OF LAGOON (vs EDIBLE) COCKLES

(by Bas Payne, Zoologist)



*Edible (left) and lagoon (right) cockles from Denmark. These look very different, but both species are rather variable, overlapping in shape and in colour, and varying with age and in response to local conditions.*



# LAGOON COCKLES (vs Edible)



and by boat (May 2025)



- Always good when external parties wish to do scientific studies
- Lagoon cockles were reported in the Pond in the 1990s
- Plenty of shells in 2025, but no live lagoon cockles found
- Several other species of mollusc were identified
- Bas not too disheartened - it is usual to find relatively few species in saline lagoons, and for populations to boom and crash – eg causes can be episodes of low oxygen or low salinity: salinity in May was low, varying from 1-5 parts per thousand (seawater is usually around 35 ppt)

# OYSTERS BY THE TIDAL GATES



- We have, for the first time, noticed oysters by the tidal gates.
- Contacted sisters Poppy and Lottie Johns from Harbour Oysters, who have installed around 4,000 native oysters in Emsworth Marina and are currently in the process of placing more in and around Chichester Harbour.
- Our are probably Pacific oysters, which are technically invasive; they were brought in from Japan in the 1960s onwards to replace the missing natives.
- The oysters have apparently thrived in the last few years as waters are on average a couple of degrees warmer.
- Every oyster plays an important role in filtering water and improving water quality, so we are pleased to see them “doing their thing”.

# **FUTURE PLANS**

# CHALLENGES

- South-west Bank Slippage
- Sluice Apron potential undercutting (tie in with SW Bank Slippage – not yet costed)
- Tidal gate wall??
- KCIII Coastal Path (monitor visitor numbers, footpaths, erosion etc)
- Dolphin Quay Bank erosion?

# WE WOULD LOVE YOUR HELP - THERE IS MUCH TO DO!

- Annual Dinner – help with canvassing local businesses and collecting and organising Raffle Donations (to assist Brenda Scott & Carol Common).  
*Jenny Hailstone kindly volunteered to help.*
- Expert input and advice particularly needed are:
  - IT Skills – help with website, newsletters, emails etc
  - Structural engineering
  - Finance – Treasurer?
  - Legal
  - Environmental
  - etc
- Involvement can be very interesting and rewarding.

# Video from Pedro Perez, Wildlife Enthusiast

*A short video was played at the end of AGM but is too large to be included in the Minutes. If you would like to watch it, the video can be found on the home page of the website [www.SMPPA.ORG.UK](http://www.SMPPA.ORG.UK)*

# *Any Questions or Any Other Business?*

- *It was suggested that the SMPPA could put together a “Talk” that can be made to local groups such as the Sailing Clubs, U3A etc as Members thought this would be of interest. JG will follow up.*

**THANK YOU TO  
ALL OUR  
VOLUNTEERS and  
TRUSTEES!**