

Slipper Mill Pond Preservation Association CIO

AGM – 13 March 2025

relating to the financial year 1 October 2023 – 30 September 2024

Winning Poem from the Annual Dinner – 30 November 2023

written by Linzi Coull, Slipper Road (read by Sally Davis in her absence)

*An ode to the pond that we love and adore
For the birds and the fish and the creatures on shore
For the people who walk and who smile and who care
For the laughter and moments around the pond that we share*

*For those who like fishing or walking their dogs
For those who like watching or searching for frogs
For the parents and toddlers and feeding the ducks
For the youths in the summer and all of their....*

*For the neighbours and tourists, the young and the old
For the bright summer sun and the dark winter cold
Such a joy for us all, and bringing such pleasure
It's a place we call home and a thing we must treasure*

AGENDA

Chairman's welcome and apologies for absence

1. To approve the Minutes of the previous AGM held on 13 March 2024
2. To receive the Annual Report of the Chairman and Trustees for the year ending 30 September 2024
3. To receive, and, if agreed, approve, the Annual Statement of Accounts for the year ending 30 September 2024
4. To elect Trustees of the CIO
5. Chairman's update
6. Any other business / Any questions at end

CHAIRMAN'S WELCOME

Attendees (24):

- **Trustees** (4 of 4) – Jo Greenfield, Simon Dwyer, Simon Eveleigh, Jim Hailstone
- **Members (14 voting households)**
 - Jane & Den Barry
 - Carol Common
 - Alexandra & Dominic Gibb-Gray
 - Christine Hows (co-opted Trustee)
 - Chrissie & Chris Maclean
 - Jill Millar
 - Keith Nicholls
 - Martin Perry (Associate Member)
 - Jonathan Robertson
 - Brenda Scott
 - Betty Smith
 - Jane Smith
 - Stephen Turley
 - Rob Turner
 - Edward & Martina Whalley

CHAIRMAN'S WELCOME

- WELCOME, especially to any new members
- 133 total Members as of end Sept 2024 – currently 105 full or honorary (voting) members
- **Apologies for absence (12)**
 - Marilyn Greatorex
 - Stephanie Bamford & Mark Wilkinson
 - Tim & Catherine Jones
 - Graham & Marguerita Taplin
 - Roy Guthrie
 - Sarah Plender
 - Penny & Colin Montague
 - Pam Wilkinson
 - Joanne & Dave Morley
 - Bill & Gill Keeble
 - David & Jan Urry
 - Nick & Catherine Madinaveitia

CHAIRMAN'S WELCOME

- **Postal /Email Votes received supporting all motions (10):**
 - Stephanie Bamford & Mark Wilkinson
 - Roy Guthrie
 - Fraser & Susan Dibden
 - Iris Buck
 - Joanne & Dave Morley
 - Tim & Catherine Jones
 - Jonathan Robertson
 - Pam Wilkinson
 - Nick & Catherine Madinaveitia
 - David & Jan Urry

VOTING PROCESS - CONSTITUTION

- FULL members only can vote, not Associate Members/Friends
- ONE vote per household
- Votes first
- Chairman's report - overview of activities
- Questions at the end

**Quorum for AGM is:

- 5% of (105) full members (ie 5) or 3 full members – whichever is greater
- 2 trustees or 33% of 4 trustees (ie 2) - whichever is greater

AGM MINUTES – MOTION 1

- To approve the Minutes of the previous AGM held on 13 March 2024 (Minutes sent out by email and/or hand delivered)
- *The Motion was approved*

2023-24 ANNUAL REPORT – MOTION 2



Slipper Mill Pond Preservation Association CIO
Registered Charity No. 1180249
www.smppa.org.uk

ANNUAL REPORT OF THE TRUSTEES

for the period 1st October 2023 to 30th September 2024

Charity Name:	Slipper Mill Pond Preservation Association CIO (SMPPA CIO)
Registered Charity Number:	1180249
Charity's Registered Address:	56 King Street, Emsworth, PO10 7AZ

1. Objectives and Activities of the CIO and its Governing Document

Slipper Mill Pond Preservation Association "The CIO" is governed according to its constitution which states that its objectives are:

'To protect and conserve the wildlife and natural environment of the Slipper Mill Pond, which is located in the Parish of Southbourne, West Sussex, for the benefit and quiet enjoyment of the public.'

The Trustees have had regard to the Charity Commission's guidance on public benefit.

The CIO manages the Pond and its environs, focusing on the environment, conservation, heritage and recreation, while providing an open space for the general public. The Pond is a saline lagoon, a very rare wildlife habitat, both in the UK and Europe. The combination of sea and fresh water provides a unique brackish water environment which has been recognised as a Sussex 'Local Wildlife Site' (LWS) and 'Site of Nature Conservation Importance' (SNCI) as it is home to many special species. It is inside the Chichester Harbour Area of Outstanding Natural Beauty (AONB) and is part of the Chichester District Council Strategic Wildlife Corridor from Hermitage to Westbourne. The Pond is listed as a "Local Green Space" on the Southbourne Parish Neighbourhood Plan.

The Pond was built in the 1760s to provide power to drive the Slipper Mill, one of four working mills in Emsworth supplying meal for the Navy in Portsmouth. The tidal gates are pushed open as the sea breaks over the gates, and close as the tide turns, holding back the sea water which, in the past, powered the Mill. The tidal gates and sluice gate are both listed on the Southbourne Neighbourhood Parish Plan as important "Heritage Assets".

Environmental objectives include: to provide an environment that will encourage the growth of native plants and wild flowers and encourage wildlife, to use indigenous, salt resistant trees, shrubs, wild flowers and under planting; to enhance the natural beauty and views of the pond, including the removal of tired and overgrown planting where appropriate.

Heritage objectives include the maintenance and preservation of the sluice gate and tidal gates which are still operated and in working order.

Formal requirement for the CIO.
Publicly available document –
format defined by the Charity
Commission.

- To receive the Annual Report of the Chairman and Trustees for the year ending 30 September 2024
- *The Motion was approved*

FINANCIAL ACCOUNTS – MOTION 3

SLIPPER MILL POND PRESERVATION ASSOCIATION CIO
Registered Charity No. 1180249
YEAR ENDED 30 SEPTEMBER 2024



INCOME & EXPENDITURE

<u>INCOME</u>	<u>2023/24</u>	<u>2022/23</u>	<u>Change on Previous Year</u>
Subscriptions	2,003	1,725	278
Donations	10,606	1,083	9,522
Dolphin Quay Rent	2,000	2,000	0
Gift Aid	639	429	210
Sale of Bird Books, Notelets etc	30	46	(16)
Bank interest	89	0	89
M&G Dividend Income	443	0	443
Annual Dinner income	3,011	2,795	216
Other income (Broomfield donation)	350	0	350
Total Income	19,169	8,078	11,091

<u>EXPENDITURE</u>	<u>2023/24</u>	<u>2022/23</u>	<u>Change on Previous Year</u>
Broomfield Schools Photographic Competition	403	322	81
Annual Dinner, Spring Talk, Summer Party, AGM costs	2,323	2,032	291
Public Liability Insurance	400	308	92
Legal Fees	0	0	0
Planting	220	166	54
Maintenance - infrastructure	42	463	(421)
Maintenance - vegetation	554	473	80
Printing/Stationery/Postage/Misc	174	155	19
Signage	243	127	116
Website	122	122	0
Sluice Gate & Apron	305	0	305
Total Expenditure	4,785	4,169	616

NET INCOME (EXPENDITURE) **14,384** **3,909**

BALANCE SHEET

<u>ASSETS</u>	<u>2023/24</u>	<u>2022/23</u>	<u>Change on Previous Year</u>
Cash at Bank* (Current Account)	1,074	16,320	(15,247)
Bank Interest Account	5,589	0	5,589
M&G Charifund **	24,259	0	24,259
Accounts Receivable (Debtors)	-	-	-
	30,921	16,320	14,601

<u>LIABILITIES</u>	<u>2023/24</u>	<u>2022/23</u>	
Accounts Payable (Creditors)/Cheques in hand	-	-	

NET ASSETS **30,921** **16,320** **14,601**

*Broomfield Schools Photographic Balance incl above 248 300 (52)
** includes Long Term (protected funds) 7,042
*** initial investment 24,042

Approved by the Trustees
January 2025

To receive, and, if agreed, approve, the Annual Statement of Accounts for the year ending 30 September 2024

Financial accounts have been reviewed by the Trustees.

2023-24 Income

<u>INCOME</u>	<u>2023/24</u>	<u>2022/23</u>	<u>Change on Previous Year</u>
Subscriptions	2,003	1,725	278
Donations	10,606	1,083	9,522
Dolphin Quay Rent	2,000	2,000	0
Gift Aid	639	429	210
Sale of Bird Books, Notelets etc	30	46	(16)
Bank interest	89	0	89
M&G Dividend Income	443	0	443
Annual Dinner income	3,011	2,795	216
Other income (Broomfield donation)	350	0	350
Total Income	19,169	8,078	11,091

- Very generous donors who wish to remain anonymous
- New M&G Charifund account set up in April 2024
- M&G Charifund Dividend Income & Barclays Bank Interest

2023-24 Expenditure

<u>EXPENDITURE</u>	<u>2023/24</u>	<u>2022/23</u>	<u>Change on Previous Year</u>
Broomfield Schools Photographic Competition	403	322	81
Annual Dinner, Spring Talk, Summer Party, AGM costs	2,323	2,032	291
Public Liability Insurance	400	308	92
Legal Fees	0	0	0
Planting	220	166	54
Maintenance - infrastructure	42	463	(421)
Maintenance - vegetation	554	473	80
Printing/Stationery/Postage/Misc	174	155	19
Signage	243	127	116
Website	122	122	0
Sluice Gate & Apron	305	0	305
Total Expenditure	4,785	4,169	616
NET INCOME (EXPENDITURE)	14,384	3,909	

- No significant expenditure other than routine spend
- £305 on sluice gate adjustments
- Planting spend was trees in autumn 2023
- Vegetation Maintenance – £200 on matting trial for phragmites reeds, new wheeled strimmer
- Net Income of £14,384

2023-24 Summary & Bank Account Position

<u>ASSETS</u>	<u>2023/24</u>	<u>2022/23</u>	<u>Change on Previous Year</u>
Cash at Bank* (Current Account)	1,074	16,320	(15,247)
Bank Interest Account	5,589	0	5,589
M&G Charifund **	24,259	0	24,259
Accounts Receivable (Debtors)	-	-	
	30,921	16,320	14,601
<u>LIABILITIES</u>	<u>2023/24</u>	<u>2022/23</u>	
Accounts Payable (Creditors)/Cheques in hand	-	-	
<u>NET ASSETS</u>	30,921	16,320	14,601
*Broomfield Schools Photographic Balance incl above	248	300	(52)
** includes Long Term (protected funds)	7,042		
*** initial M&G investment	24,042		

CURRENT POSITION

	YE 2024	28 Feb 2025
Restricted Funds:		
Broomfield fund	248	568
M&G Charifund Endowment	7,042	15,058
Total Restricted Funds	7,290	15,626
Unrestricted Funds:		
Bank account (less Broomfield)	6,415	11,992
M&G Charifund (not protected)	17,217	17,285
Total Unrestricted Funds	23,632	29,277
TOTAL M&G Charifund units	1,597.319	2,124.590

- Aim of M&G Charifund is to provide income. Capital may go up or down. 2024 Dividends £443. 2025 YTD Dividends £727.
- 2025 YTD Gift Aid £2,685 (20%)
- YE 2023 Total Funds were £16,320 (of which £300 restricted – Broomfield)

FUNDING OF THE SMPPA

- £2,000+ in membership fees (+ Gift Aid).
- Membership fees increased in October 2024 (first increase for 20 years)
- £2,000 per annum from Dolphin Quay rent
- 2024 received very generous donations (£10,606) – of which £7,042 to long term endowment
- Main fund-raising is the Annual Dinner (net income £816 – November 2023)
- Barclays savings account interest
- Formal “Investment Policy” under consideration, eg
 - Maintain £3,000 in interest bank account (instant access)
 - Keep balance in M&G Charifund (approx 5% in dividends 1/4ly - 3 day access)
- October 2024 - Barclays Bank requested an explanation / analysis for why our income had increased so much!

LONG TERM ENDOWMENT (RESTRICTED) FUND

- This is a start to fix the long term funding of the Charity/CIO.
- We have taken on the commitment to look after the Pond effectively in perpetuity but we have had no real funds to do this.
- For everyone the future is somewhat uncertain.
- In order to match our long term commitments we are trying to build up our long term funds.
- Very grateful to our anonymous donors who share this view.
- Should you share this vision and wish to add to this fund we would be very grateful. Just mark your donation Long Term Fund and we will do the rest.
- In future we may launch a campaign to target Legacies from generous members who support our long term ideas.

PROJECT FUNDING

- Aim is to use our annual income for routine maintenance, engineering surveys and advice leading up to a properly defined project.
- Intention is not to use our routine income to fund projects. We would like to define a project and then raise funds specifically for that purpose.
- There are 3 projects which are approaching in this category.
 - South-west corner bank (by boat moorings) – not yet costed, pending survey
 - Phragmites Reed Management
 - Dolphin Quay ??? – under investigation

FINANCIAL ACCOUNTS – MOTION 3

To receive, and, if agreed, approve, the Annual Statement of Accounts for the year ending 30 September 2024

The Motion was approved

ELECTION OF TRUSTEES

Maximum term for a Trustee is 9 years.

1/3 of Trustees must resign at every AGM.

Currently 4 Trustees

- *Jo Greenfield (Chairman) (since 2019)*
- *Simon Dwyer (2019)*
- *Simon Eveleigh (2019)*
- *Jim Hailstone (2022)*

- *NB Christine Hows (co-opted Membership Secretary since March 2024) – pending vote*

NB Sharon Corbett resigned March 2024

Maire Park resigned February 2025

We thank them for their very valuable contributions over the years

RE-ELECTION OF TRUSTEES – Motion 4

4 (i) Jo Greenfield resigns by rotation offers herself for re-election

The Motion was approved

4 (ii) Simon Eveleigh resigns by rotation offers himself for re-election

The Motion was approved

4 (iii) Simon Dwyer resigns by rotation offers himself for re-election

The Motion was approved

ELECTION OF NEW TRUSTEES

Motion 4

Proposal for election of new Trustee

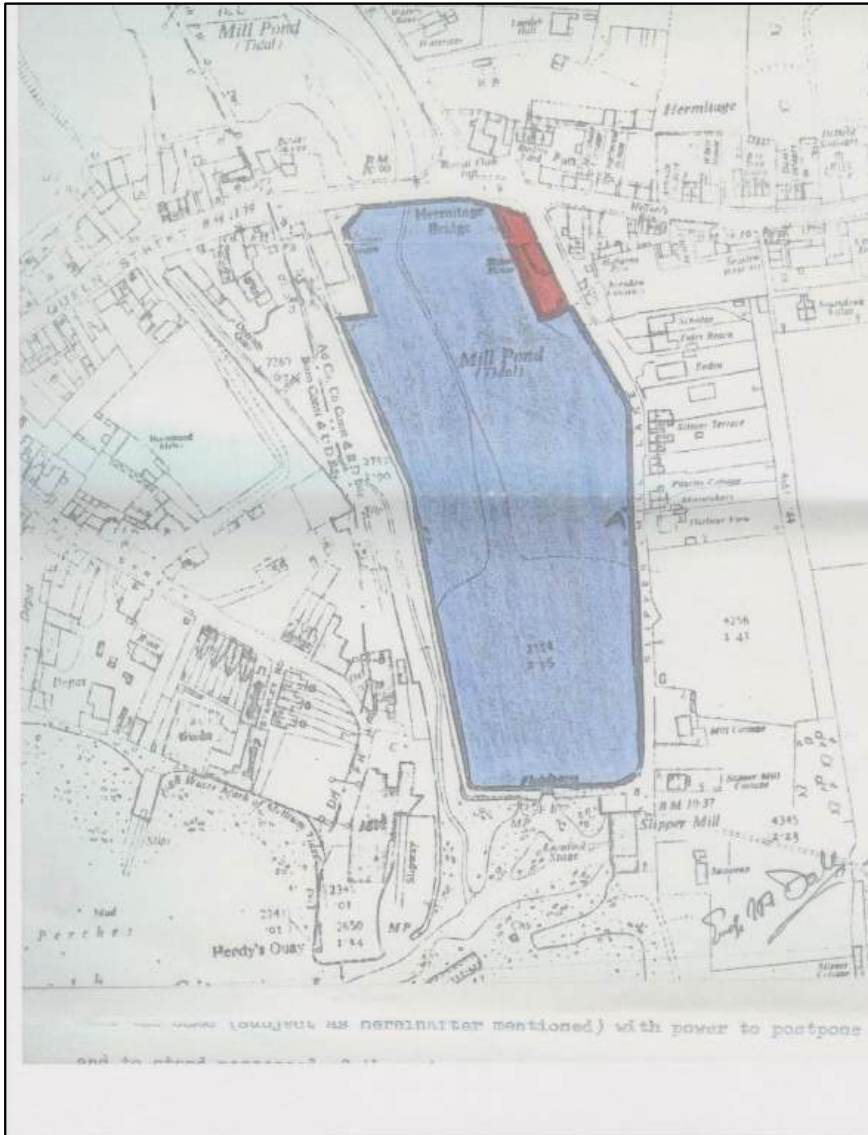
Christine Hows – Membership Secretary

The Motion was approved

Applications for new Trustees – always welcome

SMPPA CHAIRMAN'S REPORT 2023-24 HIGHLIGHTS

OWNERSHIP TRANSFER



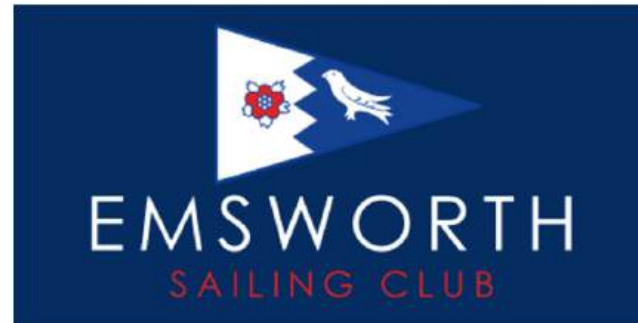
- Legal paperwork completed 22 April 2022
- We have recently discovered from our solicitor (Trethowans) that the Land Registry have lost the initial application so this has been re-submitted.
- Currently taking around 20 months to register more complicated first registrations, like this one

2023-24 ACTIVITIES

- October 2023 workparty
- Annual Dinner in November 2023
- Phragmites Reeds – New “Reeds Subgroup” – March 2024 – making real progress
- Broomfield Schools Photographic Competition – April/May 2024
- Summer Garden Party – July 2024
- Infrastructure maintenance (no major costs)
- Vegetation maintenance (no major costs)
- Last planting was in autumn 2023

EVENTS

ANNUAL DINNER - 30 November 2023



<ul style="list-style-type: none">• 36 on the Quay - voucher for 2 course set menu for 2• Crew Hair Salon - hair straighteners• Emsworth Co-op - chocolates and biscuits• Emsworth Delicatessen - voucher for £10• Emsworth Heating - 6 vouchers for boiler services• Emsworth Home Hardware - 2 bottles of wine• The Deck - £25 voucher• Driftwood - 4 x £10 vouchers• Felix Tabitha - lantern candle holder• Lord Raglan - voucher for breakfast for 2• Vin Wine Merchants - voucher for wine tasting for 6	
---	--

- Emsworth Sailing Club – for the first time - 70 Guests
 - Poetry Competition, Quiz of Bird Songs
- Raffle – generous donations from 11 local businesses
 - Guess the Weight of the Hamper
 - Net profit £816
- Thankyou to Maire Park who organised the dinners for the last 3 years

BROOMFIELD SCHOOLS PHOTO COMPETITION - 2024

2024 Prize Winners

In 2024 we received 115 photos from a record 61 pupils across the 6 participating schools. As ever, the standard was excellent, making the judges' job very difficult!

In addition to the 8 overall winners (1 for each subject per year group), the judges awarded 16 "Certificates of Merit".



2024 Overall Winning Photo - Any Subject
"Topped Town" by Jakey Walsh - Year 5 -
St James Emsworth



2024 Overall Winning Photo - Local Nature
"Emsworth Falls" by Freya Chapman - Year 5 -
Emsworth Primary School



Year Group Winners - "Any Subject"

Year 3: "Rustington rainbow residences" - Finley Bevan - St James
Year 4: "Chi-Cat" - Theadora Tarrant - Funtington
Year 6: "Parallel Universe" - Ambrose Bristowe - Westbourne

Year Group Winners - "Local Nature"

Year 3: "Goosey Gander" - Mariowe Johnson - Funtington
Year 4: "Frosty Feather" - Lucy Birdsall - Westbourne
Year 6: "Splish Splash down the stream" - Holly Birdsall - Westbourne

- Started in 2012 – Maurice Broomfield legacy
- Pupils from years 3-6 of six local primary schools can submit one photo in each of two categories: Local Nature and Any Subject.
- Prizes awarded in each category/age group with 2 overall winners. Judges also awarded 16 "certificates of merit".
- 115 photographs entered from 61 pupils in 2024

BROOMFIELD SCHOOLS PHOTO COMPETITION - 2024



- Judging carried out by Gilbert Park, Claire Starling, Jonathan Stamper - thankyou
- Jo liaises with schools and pupils
- Maire does photo mounting/ display and Co-op refreshments
- Winning photos are displayed in the Emsworth Co-op afterwards
- All pupils get their printed/ mounted photos

All photos are exhibited in the community centre as part of the Emsworth Arts Trail (early May bank holiday)

Do come along to see them!

BROOMFIELD SCHOOLS PHOTO COMPETITION

- Very popular with the 6 participating primary schools.
- Helps to involve the SMPPA in the local community
- Costs approx £400 pa in prizes and materials
- Maurice's son Nick Broomfield came to the prize-giving in 2024 – first time for several years.
- He has topped up funds for the last 2 years – 2025 is funded.
- However, he is keen to look at future funding options – ideas welcome.

SUMMER GARDEN PARTY

28th July 2024



Hosted at Slipper House again by Claire Starling & Simon Dwyer - thankyou
Great turnout of more than 50 members
A most pleasant way to spend a Sunday afternoon as usual

COMMUNICATIONS

COMMUNICATIONS

The Broomfield Schools Photographic Competition

The competition is run each year by the Slipper Mill Pond Preservation Association (SMPPA), the local charity which owns and maintains the Slipper Mill Pond on the east side of Emsworth. The pond is a wildlife haven and a designated site of nature conservation interest, a beautiful resource for both locals and visitors. Maurice Broomfield, a well known photographer, lived beside the pond and left a legacy to the SMPPA which has been used to set up and support the photography competition in his name; the aim being to encourage schoolchildren to take photographs.



Left to right : Back row:
Jo Greenfield, chair SMPPA, Nick Broomfield, documentary film maker Gilbert Park, competition judge

The competition is open to six local primary schools (Emsworth Primary, St James Primary, Westbourne Primary, Southbourne Juniors, Thorney Island Primary and Funtington Primary) and is a very popular extra curricular activity. Children aged 7-11 submit a photograph in each of the two categories, local nature and any subject. This year 61 pupils submitted 115 photographs.

All the photographs are judged in early April and then printed and mounted for presentation. The winners, one in each category for each of school years 3-6, receive prizes as do the schools attended by the overall winners. All the photos are then on display as part of the Emsworth Arts Trail.

The prize giving ceremony for the 2024 Broomfield Photography Competition was held on Friday 3rd May. This year, the well known documentary film director Nick Broomfield (Maurice's son), attended the prize giving. He was delighted to see his father's legacy in action and to be photographed with the winners. The photographs were of a very high standard which made the judges' job difficult.

For more information on the Slipper Mill Pond Preservation Association and the Broomfield Schools Photographic Competition, go to SMPPA.org.uk



"Topped Town" by Jake Walsh
"Emsworth Falls" by Freya Chapman



Community

- Newsletter twice a year (January & July).
- Trying to reduce the number of printed copies.
- June 2024 issue of The Village Magazine (p17) www.thevillagemagazine.co.uk (see photo)
- Website (Jo)
- Instagram account (Linzi Coull – thank you)
- “Pond Life” WhatsApp group for reporting anti-social behaviour (Jo is admin)
- Presentations/updates at AGM & Annual Dinner
- New Dolphin Quay WhatsApp group to be set up soon

WEBSITE & INSTAGRAM



Our Pond - a Haven for Wildlife in Emsworth

Welcome to the Slipper Mill Pond Preservation Association (SMPPA). We are a registered charity which exists to preserve and protect the Slipper Mill Pond in the parish of Southbourne, on the eastern edge of Emsworth. The SMPPA was founded in 1966 and is made up of volunteers, Members and Friends of the SMPPA who are responsible for the Pond's day to day management and maintenance.

The Pond is a saline lagoon, a very rare wildlife habitat, both in the UK and Europe. The combination of sea and fresh water provides a unique brackish water environment. It has been recognised as a [Local Wildlife Site](#) and [Site of Nature Conservation Importance](#) and home to many special species. It is inside the Chichester Harbour National Landscape (formerly Area of Outstanding Natural Beauty or AONB) and is part of the proposed Strategic Wildlife Corridor from Hermitage to Westbourne. The tidal gates and sluice are listed on the Southbourne Neighbourhood Parish Plan as important 'Heritage Assets'.

The Pond supports a rich invertebrate fauna including two protected species - the [Tentacle Lagoon Worm](#) and [Starlet Sea Anemone](#). It also has an interesting species of tube worm, which leaves tube-like casts, along with over [40 bird](#) and [160 plant](#) species, and several [fish](#), particularly the grey mullet, which can be present in large numbers.

The pond covers an area of around 7 acres (3 hectares) and was built in the 1780s to provide power to drive the [Slipper Mill](#), one of four working mills in Emsworth supplying meal for the Navy in Portsmouth. The [gate gates](#) are pushed open as the sea breaks over the gates, and close as the tide turns, holding back the sea water which, in the past, powered the Mill.

The mill was in constant use until the 1960s when it was sold. The Pond itself was bought by 33 local residents in 1980 off the then owners Slipper House, in order to prevent the Pond from being developed. In April 2022 the Pond was gifted to the SMPPA who now owns and continues to manage the Pond. [The article in THE EME newspaper](#) explains the background in more detail.

- The Pond is a designated Local Wildlife Site and is privately owned by the SMPPA Charity. **SWIMMING IN THE POND AND BOATING OF ANY KIND IS NOT ALLOWED.** Anyone doing so will be asked to move along.
- We request that you **DO NOT CLIMB ON OR JUMP FROM THE FOOTBRIDGE AND SURROUNDING INFRASTRUCTURE** as these are important historic Heritage assets and are not designed for this purpose.
- FISHING** - our fishing policy can be found on signs around the Pond, and also on our [Fish, Bats & Mammals page](#)
- Useful contact numbers for Police, Reporting Wildlife in Distress, Pollution etc can be found [here](#) and also on our notice board on Slipper Mill

News

Tidal Gate Opening Dates - Pond Draining

In general, we chain back the tidal gates to drain the Pond over spring tides in the winter months (late September-February inclusive). If there are high water levels up river, this is particularly helpful to get rid of any silt. It also enables up-stream valves and culverts to be cleared or serviced (eg on Peter Pond), and allows access to inspect the sluice and gates. It is also a good opportunity to remove litter, and carry out any repairs or work that needs doing on the water's edge.

We are now chaining back the gates for longer periods at the request of the Chalk Stream Rivers Project. By leaving the Slipper Mill Pond tidal gates open for longer, there is more time and opportunity for the fish, particularly trout and eels, to swim from the sea into the Pond, and from there make their way up the River Ems to spawn (these fish spawn from November to February). Research carried out elsewhere by a company called [FishTact](#) found that one gate held open for just 25 minutes longer resulted in a ten-fold increase in the number of eiders moving upstream through the tidal gate.

More details at www.wildtrout.org/content/trout-lifecycle and www.west.org.uk/our-rivers/the-river-ems

We try to avoid draining the Pond from late February through early September due to the need to protect the wildlife during the breeding season. We therefore only chain open the gates in the spring or summer when we consider it to be an 'emergency' situation.

A link to the Westbourne Gauge historic river level data is [here](#).

www.smppa.org.uk

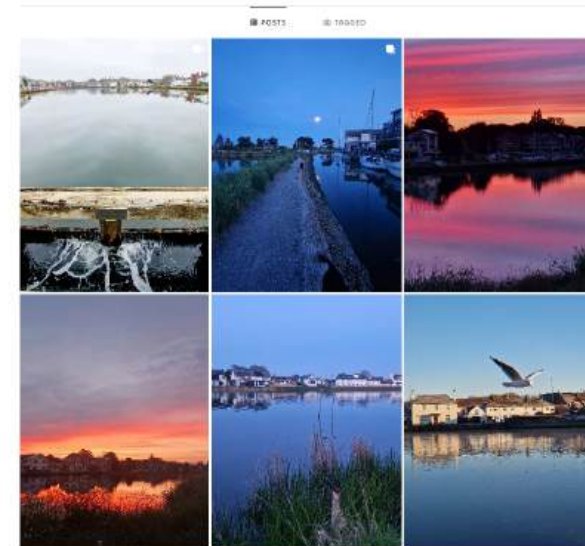


slippermillpond Following Message etc

37 posts 104 followers 8 following

Slipper Mill Pond Preservation Association is a registered charity which exists to preserve and protect the Slipper Mill Pond in Emsworth.

Followed by: churchoffield and kirktrouffwaterston



[instagram.com/slippermillpond/](https://www.instagram.com/slippermillpond/)

- New "search bar" to assist with research
- Useful contacts, Historical Timeline
- Events dates & information
- Aim for it to be a comprehensive information source

etc etc

SIGNAGE



- Bourne Walking Trail, includes Slipper Mill Pond - www.bournetrail.co.uk/slipper-mill-pond/
- Lots of interesting facts about the locations covered, along with some historical photos
- SMPPA additional information board to go on Slipper Mill wall in 2025



FISHING

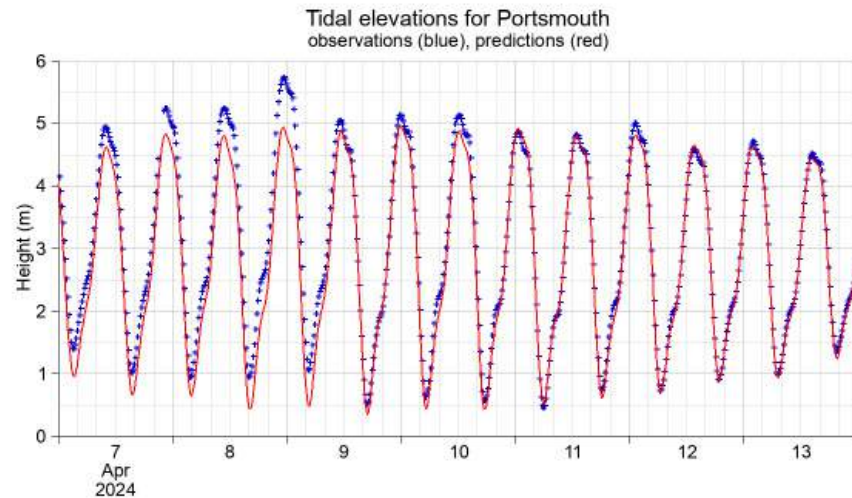


- Additional sign now by A259
- 3 signs total (detailed policy on Slipper Mill Wall)
- Since fishing policy clarified, now rarely get asked about fishing rules
- Rules much clearer:
 - Line fishing only from the south bank
 - Anglers to return all fish to the Pond, regardless of size or species

Jane Barry asked if more signage could be added in the Pond at the north end. It is felt that additional signage will not necessarily deter fishing there (eg Peter Pond signs are often ignored). The new sign (pictured) is there to help enforcement (eg by the Police or general public).

APRIL 2024 HIGH TIDE

Real-time/near real-time data display for Portsmouth



- Very high tides 8th April 2024 - tidal surge of 0.78m increased the height to 5.95m.
- We chained back the gates at 10.30pm to enable the Pond to drain more quickly. Although having the gates open does not impact the tidal height, this does seem to speed up the rate at which the water recedes.
- Many properties close to the A259 bridge and at the bottom of Queen Street were badly impacted, including Slipper House. Situation was exacerbated as the roads remained open and passing traffic caused waves of floodwater high against the houses and over barriers.

ANTISOCIAL BEHAVIOUR

- Anti-social behaviour not such an issue in 2024.
- Some local residents have taken additional prevention measures including ladder guards (which prevent access from the water), and “mosquito alarms”.
- Several meetings with the Police, including 2 presentations by Hampshire Police & Crime Commissioner Donna Jones. **ALL CRIME SHOULD BE REPORTED** so that the Police can allocate resources appropriately using the data available.
- There are now 54 people in the “Pond Life” whatsapp group, which is used to communicate anything suspicious.



2022



2022



2023

POND BANK INTERFERENCE - 2025



- Pond banks are privately owned by the SMPPA
- No changes to vegetation or infrastructure should be made without approval by the Trustees
- Photos show two recent examples.
- Ref the field maple tree, a letter agreed by all Trustees was sent out recently to all householders who use Slipper Road to access their properties.
- SW bank attachments for boats may need to be removed or modified

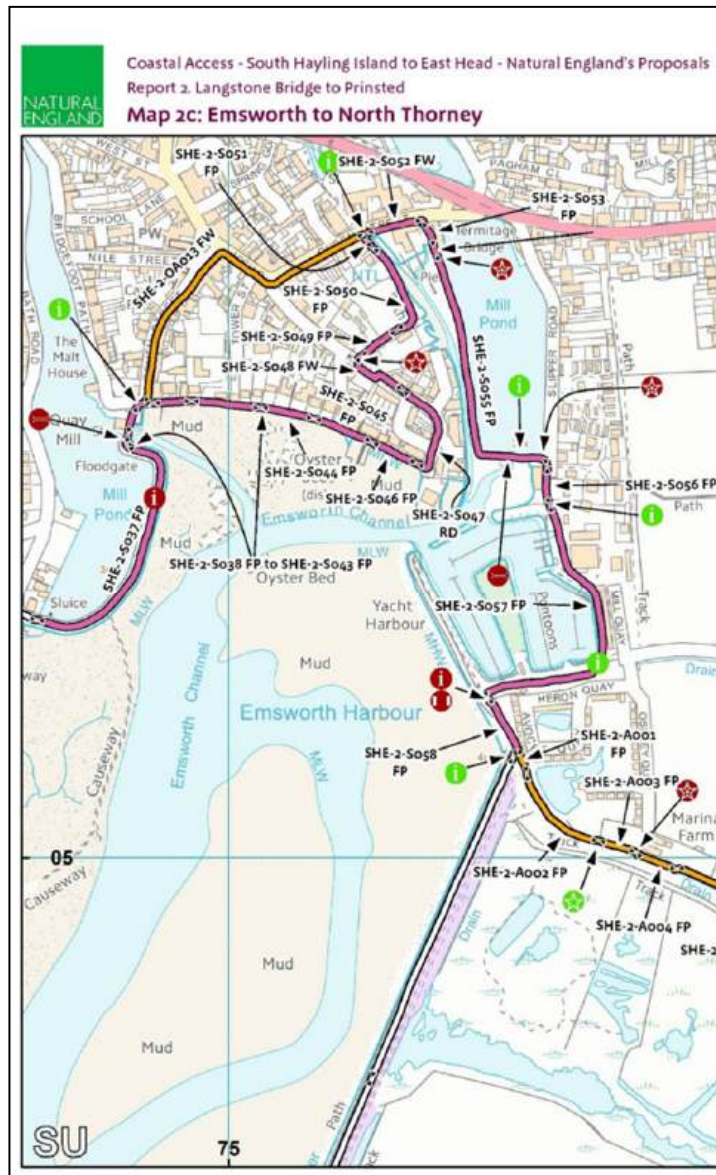


DOLPHIN QUAY



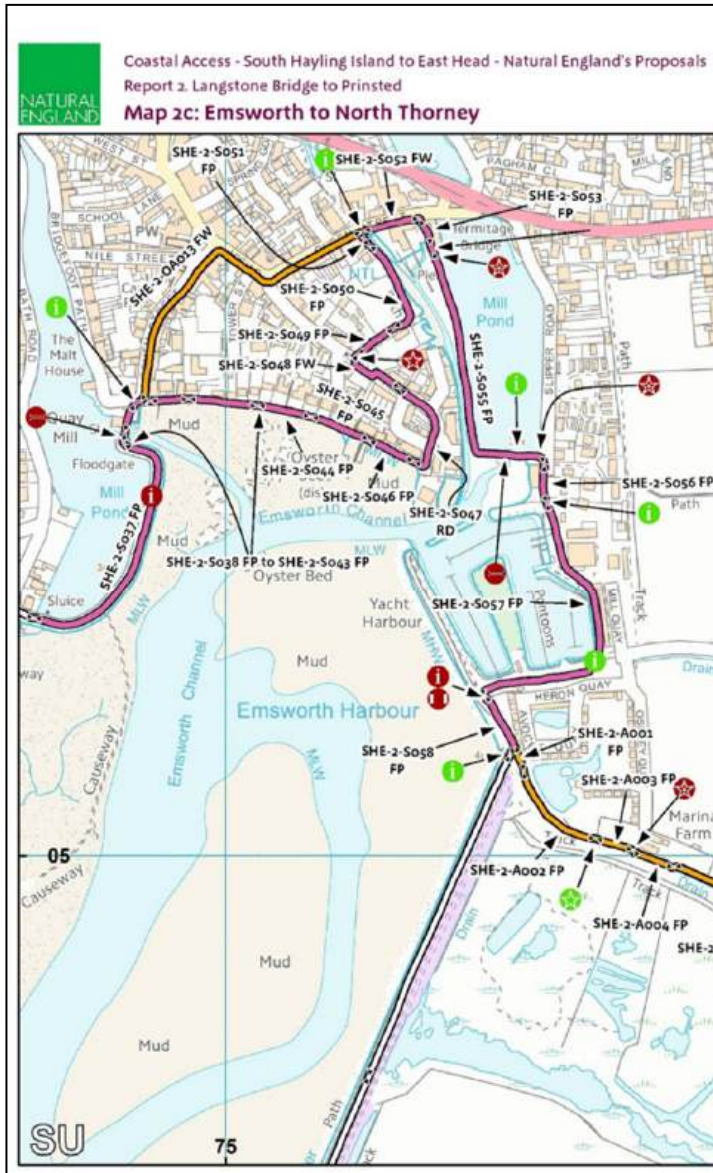
- No action in 2023/4
- Concerns over footpath with new Coastal Pathway imminent
- Footpath “shifting” east towards the water
- Erosion of banks by wave action and damage to bank caused by gang planks
- Monitoring overhanging trees
- DQ WhatsApp group to be set up soon
(complete – if you would like to join, let Jo know)
- Detailed study of area in progress
- *Brenda Scott asked if anything could be done to raise the height of the seating on the pavement, so that there could be a view over the creek. It is believed that the area is managed by the Dolphin Quay new estate. Jo will see if she can get a new contact there as Clive Nickolds has sadly died.*

KING CHARLES III COASTAL FOOTPATH



- Goes through Dolphin Quay and along the west and south banks of the Pond
- Dolphin Quay - Original discussions with Wharf House and SMPPA in 2019 (before land fully gifted)
- Low tide route is along the Emsworth beach, up King Street and through Dolphin Quay (past Wharf House)
- High tide route is through town and along Queen Street (avoiding DQ)
- Hampshire County Council cut back some vegetation in Dolphin Quay in February 2025 – path at 1.2m wide. Overhanging trees cut back at north end.

KING CHARLES III COASTAL FOOTPATH



- Concerns about increased footfall and erosion at both Dolphin Quay and along the west and south banks of the Pond
- Footpaths need attention
- In contact with Hampshire Representative
- Yet to contact West Sussex Representative
- Coastal Path Signage likely to be fitted in the summer (September launch)



PLANTING



- Last planting was in autumn 2023: Rowan tree, Downy Birch, Sea Buckthorn and Pink Hawthorn (dying)
- No planting since then
- Have lost several trees in recent years, particularly sea buckthorn (see LH photos of young tree and established tree)
- Strong growth of grasses with high rainfall in recent years: cow parsley etc mean that wildflowers do not easily take
- Hedging near Caravan Park at last getting established (tended by Rod Aitken – thank you)
- Need to monitor and control growth of ragwort and poison hemlock; we may also cut back cow parsley
- Thankyou to Sharon Corbett – her planting role has not been replaced

PLANTING

- Pam Wilkinson reviewed our planting policy subsequent to last year's AGM (thank you)
- We have a planting policy for the east bank which was established in 2011 and updated in 2020
- This is pretty good but needs refinement and communication (and a subsequent vote by members, if appropriate) - eg to include a more robust policy around plant maintenance and how we communicate future plans
- Need to keep clear records of what is done, where and when.
- Vegetation grows and changes with the seasons - we are in this for the long term
- We wish any planting to be sympathetic to residents - we cannot offer specific instant reaction to individual requests
- Hoping to develop this policy in 2025 – any help appreciated - eg Reeds Subgroup has been of real help.

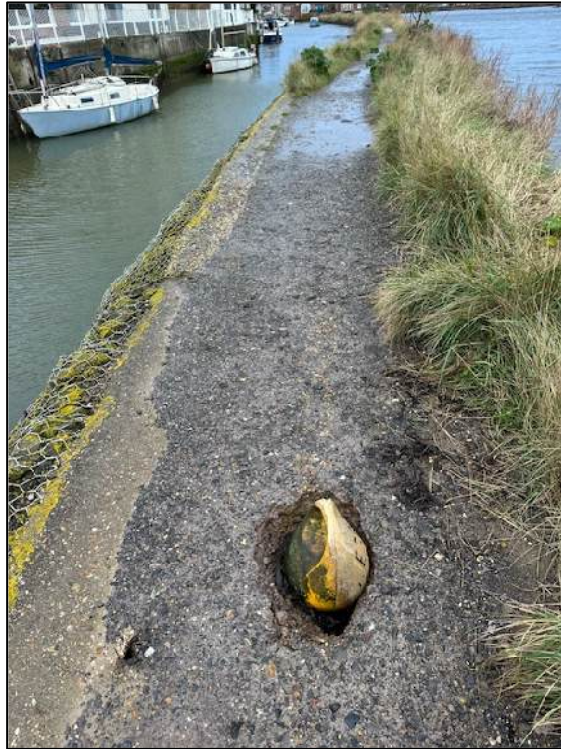
WILDLIFE INITIATIVES - 2025



- Links with Sarah Hughes through The Chalk Stream Resilience project and the River Ems (Western Sussex Rivers Trust)
- Now chaining the gates back for a week at a time October-February, to encourage fish to spawn upstream
- Nesting tubes on bird rafts (see photos) - donated by Dave Gattrell from Peter Pond
- Study of Lagoon Cockles and other creatures in the Pond by Zoologist Bas Payne (report to follow)
- Still no formal wildlife monitoring – mostly bird and fish “observations” (not recorded) - help appreciated

INFRASTRUCTURE & VEGETATION MANAGEMENT

INFRASTRUCTURE MAINTENANCE – 2023/24 (Jim Hailstone Lead)



- Tidal gate foam to infill gaps around wooden posts (see photo)
- Repair of gabion meshing along the west and south banks
- Prikkastrip on footbridge rails to deter climbing/jumping (subsequently ripped off by youths)
- Cavity repairs on the west bank footpath (ongoing – see 2025 photo)
- Monitoring of slippage on South bank (Leigh Charlton / Jim)
- Sluice gate adjustment

SLUICE GATE ADJUSTMENT – Nov 2023



- Sluice gate replaced in late 2020
- Woodworks settled since then and needed some adjustment - ratchet mechanism was slipping when used.
- November 2023, Nick Gates (of N Gates & Co) removed the roller and brackets, dowelled the holes, re-drilled them in a new position and made two new teak packers.
- All bolts were tightened; generous coatings of linseed oil were applied to the woodwork; all joints re-sealed with mastic.
- Cost £305

INFRASTRUCTURE MAINTENANCE – 2025 PROJECTS

- Survey of slippage on South bank to assess extent of problem before costing
- Sluice Apron potential undercutting
- Replacement of Prikkastrip on footbridge rails to deter climbing/jumping
- Cavity repairs on the west bank footpath (ongoing)
- Dolphin Quay information gathering in order to develop any proposals

SOUTH BANK CRACK - SLIPPAGE



Monitoring the gap

- Markers placed in August 2023 on the bank at the southwest corner adjacent to where the boats are moored
- Monitoring for any movement. *Although marker distances appear unchanged, there is now more daylight visible through the cracks.*
- Boat ladder fixings are possibly causing damage to the gabions / bank – we are in contact with CHC Moorings (moorings are private) but do not have contact with all boat owners
- Likely to require strengthening here in the not too distant future – costs unknown – will require a survey
- Boat owners may need to remove any fixings on our bank

SLUICE APRON UNDERCUT



- When repaired in February 2022, undercut was not filled.
- Infill work on hold (not costed), as logical to infill at same time as south bank slippage.
- Warning markers to be fitted to highlight edges of sluice apron (for boat users)

Monitoring the undercut

WORK PARTIES – OCTOBER 2023 & 2024



VEGETATION MAINTENANCE – 2023/24 (Jim Hailstone Lead)



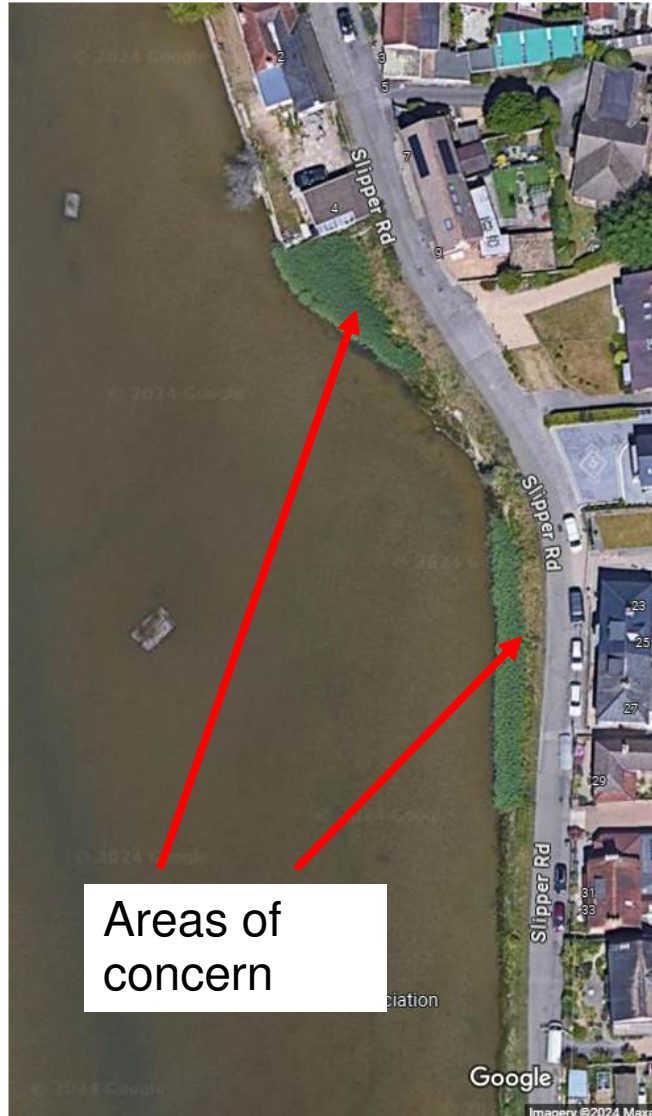
- Strimming of east bank in week running up to October work party (Slipper Road team – thank you)
- Saturday Work party removal and gathering of arisings – many volunteers
- 2023 Disposal of arisings by trailer to rubbish tip (NB hired skip in Oct 2024)
- Strimming is hard physical exercise for volunteers, and equipment not best suited – new wheeled strimmer purchased for Oct 2024 workparty

VEGETATION MAINTENANCE – 2025

(Jim Hailstone Lead)

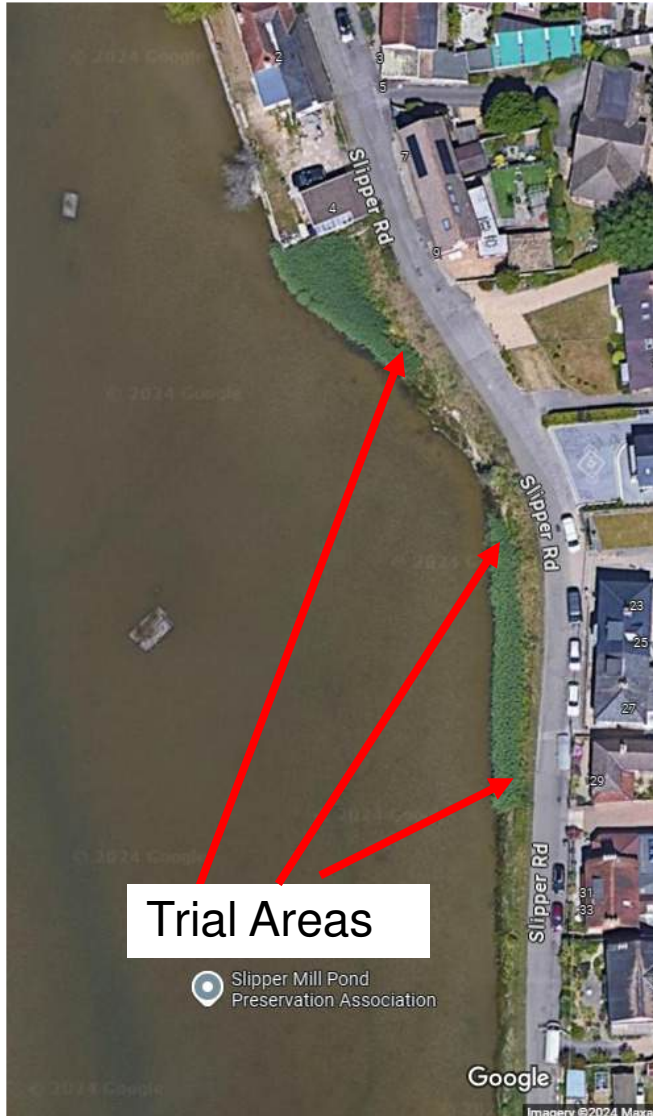
- Go back to cutting twice a year (due growth) – July and October
- Trial flail-mulcher external contractor - £360 per cut
- This removes need for work parties to trim the banks and remove arisings
- Need to ensure adequate protection around young plants/trees, so they are not damaged – residents are concerned

PHRAGMITES REEDS (Simon Eveleigh)



- Trial Matting in late 2023/early 2024 - blanketed the reeds but sea club rush placed on top got washed away and did not establish
- Reeds sub-group formed after the March 2024 AGM – thank you to Rob Turner, Leigh Charlton, Tim Hollins, Trena Nicholls, Jane Smith, and more recently Jim Hailstone
- Their initial proposal was received by the SMPPA Trustees in August 2024
- Various subsequent meetings in September and October - Trustees requested that other options be developed
- Revised proposals received on 2 March 2025 and reviewed by the Trustees on 7 March
- Comprehensive range of options presented, some using external contractors – we now have a much better understanding.

PHRAGMITES REEDS (Simon Eveleigh)



- Any digging or dredging could endanger Slipper Road foundations and a full structural survey beforehand would be recommended – these options would cause more delays
- Cutting and poisoning is the most practical and cost-effective option, and is common practice elsewhere.
- Agreed to do more extensive trials in 2025. Reeds have already been cut back in the NE section ready for treating. 5m will also soon be cut back from either end of the middle section (see picture) *** see update overleaf*
- Reeds will be treated as they start to re-grow. *A couple of members raised concerns about this; the work will be carried out by an external licensed contractor who will get approvals from the Environment Agency (this is common practice with reeds)*
- More detailed action plan of how to do this in practice is being formulated. Plan is to replace the reeds with other vegetation (eg sea club rush)

PHRAGMITES REEDS (Simon Eveleigh)

- The Trustees thank the Reeds Subgroup for their work.
- The Trustees are committed to controlling the reeds
- Underlying premise is to do no harm to the Pond or its environs
- Reed Management Plans will continue to be developed in conjunction with the Subgroup
- We will keep you informed of developments

*** Subsequent to the AGM, the Trustees agreed to increase the size of the trial area. Update on the website at www.smppa.org.uk/plants*

CHALLENGES

CHALLENGES – VEGETATION & INFRASTRUCTURE

- Phragmites Australis (Common Reeds) control – feel we are making progress
- South-west Bank Slippage (pending professional survey)
- Sluice Apron potential undercutting (tie in with SW Bank Slippage – not yet costed)
- Coastal Footpath (monitor visitor numbers, footpaths, erosion etc, incl at Dolphin Quay)

WE WOULD LOVE YOUR HELP - THERE IS MUCH TO DO!

- Need for new Trustees - Jo Greenfield, Simon Dwyer & Simon Eveleigh have 3 years remaining under the terms of the CIO Constitution. Jo & Simon E have been on SMPPA (former) Committee since 2014, more than 10 years.
- Planting strategy/policy advice, Wildlife Representation and Monitoring. *Jonathan Robertson kindly offered to help with the planting strategy/policy*
- An Annual Dinner Subgroup – ideally from Slipper Road area - does not need to be on the Committee. NB Social Secretary role has been filled by Harbour Way / King Street Trustees for around 20 years. *Carol Common and Brenda Scott kindly offered to help with the Dinner*
- Broomfield Photography Competition - help always useful
- We welcome input and advice from all members, particularly professional support and advice (engineering, finance, legal, environmental etc)
- Involvement can be very interesting and rewarding.

**THANK YOU TO
ALL OUR
VOLUNTEERS and
TRUSTEES!**

The dangers of venturing into the Mud!



**Any Questions
or
Any Other Business?**