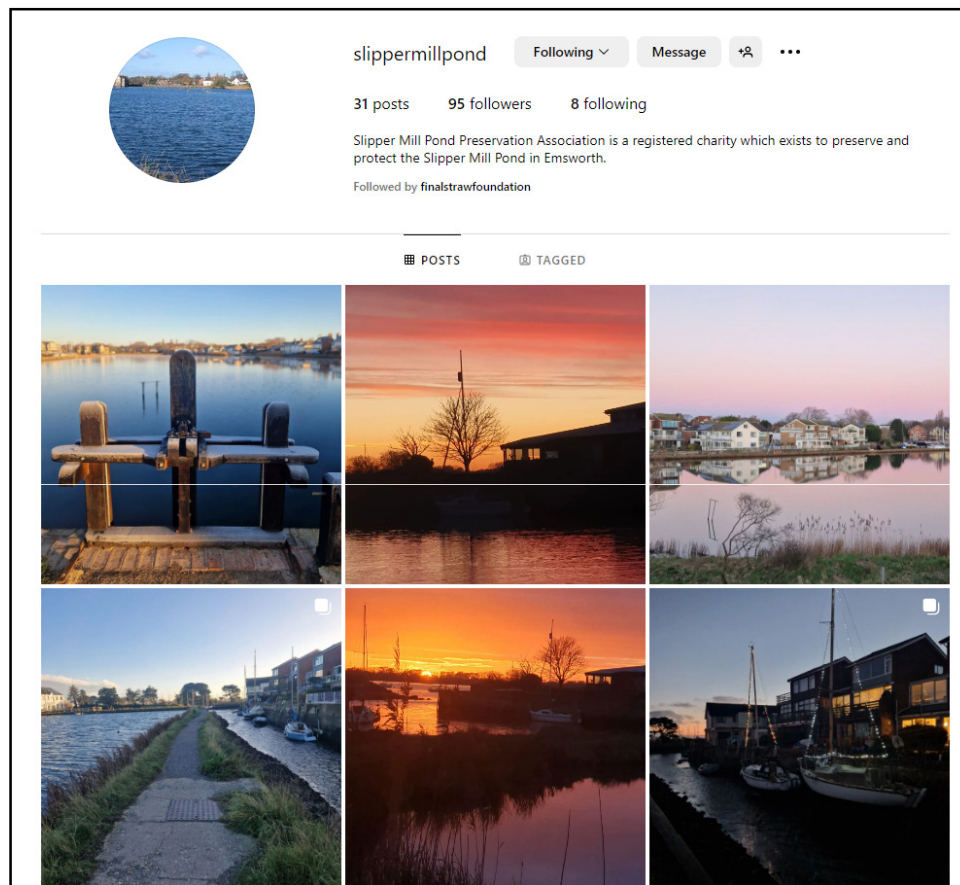


# Slipper Mill Pond Preservation Association CIO

## AGM – 13 March 2024

relating to the financial year  
1 October 2022 – 30 September 2023



instagram account  
“slippermillpond”  
*Do take a look and please follow!*

**Winning Poem from the Annual Dinner – 25 November 2022**  
**written by “the Roundhouse Meadow” table**

*Now we all love Roundhouse Meadow, but lately we've been torn  
Because it's been invaded by builders at dawn  
They've lit a lot of fires, and blocked our drives and view  
They put the radio on max and turned the air quite blue  
However, in the evening, when all is quiet and still  
We remember why we love our pond and take a sleeping pill*

# AGENDA

Chairman's welcome and apologies for absence

1. To approve the Minutes of the previous AGM held on 26 January 2023
2. To receive the Annual Report of the Chairman and Trustees for the year ending 30 September 2023
3. To receive, and, if agreed, approve, the Annual Statement of Accounts for the year ending 30 September 2023
4. To elect Trustees of the CIO
5. To increase the membership levy to £20 per annum for full members, and £10 per annum for Associate Members/Friends of the CIO
6. Chairman's update
7. Any other business

# CHAIRMAN's WELCOME

## from Jo Greenfield

### Attendees (total 36):

- **Trustees** (6 of 6) – Jo Greenfield (Chair), Sharon Corbett (Membership Secretary), Simon Dwyer, Simon Eveleigh, Jim Hailstone (Infrastructure), Maire Park (Social Secretary)
- **Members**
  - Jane & Den Barry
  - Mark Davis
  - Chrissie & Chris Maclean
  - Jill Millar
  - Andrew & Karen Partington
  - Jonathan Robertson
  - Gilbert Park
  - Jane Smith
  - Rob & Lucy Turner
  - Edward Whalley
  - Pam Wilkinson
  - Sue & Martin Dadswell
  - Clive Johnson
  - Nick Madina
  - Keith & Trena Nicholls
  - Martin Perry (Associate Member)
  - Brenda Scott
  - Betty Smith
  - Stephen Turley
  - David & Jan Urry
  - Mark Wilkinson & Stephanie Bamford
  - Helen Yoward (Associate Member)

**Total of 24 Voting Members** (membership is per household, not individual)

# CHAIRMAN's WELCOME

## from Jo Greenfield

- WELCOME, especially to new members
- 137 total Members as of end Sept 2023 – of which 102 full or honorary (voting) members
- **Apologies for absence (18)**
  - David & Caroline Richards
  - Tim & Catherine Jones
  - Graham & Marguerita Taplin
  - Roy Guthrie
  - Tim & Liz Crabtree
  - Iris Buck
  - Ellen Boon
  - Maureen Twitchen
  - Kris & Harry Baldwin
  - Sandy Bell & Graham Crane
  - Hilary & John Pritchard
  - Shirley Farmer
  - Bill Keeble
  - Lesley Harris
  - Katherine & Peter Arnold
  - Janet Nunn
  - Andy Marshall
  - Angela & Nigel Armstrong



# CHAIRMAN's WELCOME

## from Jo Greenfield

- **Postal /Email Votes received supporting all motions (14):**
  - Iris Buck
  - Stephanie Bamford & Mark Wilkinson
  - Tim & Catherine Jones
  - Graham & Marguerita Taplin
  - Roy Guthrie
  - Kris & Harry Baldwin
  - Stephanie Bamford & Mark Wilkinson
  - Hilary & John Pritchard
  - Tim & Liz Crabtree
  - Shirley Farmer
  - Lesley Harris
  - Katherine & Peter Arnold
  - Janet Nunn
  - Andy Marshall

# VOTING PROCESS - CONSTITUTION

- FULL members only can vote, not Associate Members/Friends
- ONE vote per household
- Votes first
- Chairman's report - overview of activities
- Questions at the end

\*\*Quorum for AGM is:

- 5% of (102) full members (ie 5) or 3 full members – whichever is greater
- 2 trustees or 33% of 6 trustees (ie 2) - whichever is greater

# AGM MINUTES – MOTION 1

- To approve the Minutes of the previous AGM held on 26 January 2023 (Minutes sent out by email and/or hand delivered)
- *The Motion was approved*

# 2022-23 ANNUAL REPORT – MOTION 2



CHARITY COMMISSION  
FOR ENGLAND AND WALES

Slipper Mill Pond Preservation Association CIO

Registered Charity No. 1180249  
www.smppa.org.uk

## ANNUAL REPORT OF THE TRUSTEES

for the period 1st October 2022 to 30th September 2023

Charity Name:	Slipper Mill Pond Preservation Association CIO (SMPPA CIO)
Registered Charity Number:	1180249
Charity's Registered Address:	56 King Street, Emsworth, PO10 7AZ

### 1. Objectives and Activities of the CIO and its Governing Document

Slipper Mill Pond Preservation Association "The CIO" is governed according to its constitution which states that its objectives are:

*'To protect and conserve the wildlife and natural environment of the Slipper Mill Pond, which is located in the Parish of Southbourne, West Sussex, for the benefit and quiet enjoyment of the public.'*

The Trustees have had regard to the Charity Commission's guidance on public benefit.

The CIO manages the Pond and its environs, focusing on the environment, conservation, heritage and recreation, while providing an open space for the general public. The Pond is a saline lagoon, a very rare wildlife habitat, both in the UK and Europe. The combination of sea and fresh water provides a unique brackish water environment which has been recognised as a Sussex 'Local Wildlife Site' (LWS) and 'Site of Nature Conservation Importance' (SNCI) as it is home to many special species. It is inside the Chichester Harbour Area of Outstanding Natural Beauty (AONB) and is part of the Chichester District Council Strategic Wildlife Corridor from Hermitage to Westbourne. The Pond is listed as a "Local Green Space" on the Southbourne Parish Neighbourhood Plan.

The Pond was built in the 1760s to provide power to drive the Slipper Mill, one of four working mills in Emsworth supplying meal for the Navy in Portsmouth. The tidal gates are pushed open as the sea breaks over the gates, and close as the tide turns, holding back the sea water which, in the past, powered the Mill. The tidal gates and sluice gate are both listed on the Southbourne Neighbourhood Parish Plan as important "Heritage Assets".

**Environmental objectives** include: to provide an environment that will encourage the growth of native plants and wild flowers and encourage wildlife, to use indigenous, salt resistant trees, shrubs, wild flowers and under planting, to enhance the natural beauty and views of the pond, including the removal of tired and overgrown planting where appropriate.

**Heritage objectives** include the maintenance and preservation of the sluice gate and tidal gates which are still operated and in working order.

Formal requirement for the CIO.  
Publicly available document – format defined by the Charity Commission.

- To receive the Annual Report of the Chairman and Trustees for the year ending 30 September 2023
- ***The Motion was approved***

# FINANCIAL ACCOUNTS – MOTION 3

SLIPPER MILL POND PRESERVATION ASSOCIATION CIO  
Registered Charity No. 1180249  
YEAR ENDED 30 SEPTEMBER 2023



## INCOME & EXPENDITURE

<u>INCOME</u>	<u>2022/23</u>	<u>2021/22</u>	<u>Change on Previous Year</u>
Subscriptions	1,725	1,649	76
Donations	1,083	1,361	(277)
Dolphin Quay Rent	2,000	2,000	0
Gift Aid	429	543	(115)
Sale of Bird Books, Notelets etc	46	26	20
Spring Talk / Annual Dinner income	2,795	82	2,713
Interest on Bank Accounts	0	0	0
Other income	0	0	0
<b>Total Income</b>	<b>8,078</b>	<b>5,661</b>	<b>2,417</b>

<u>EXPENDITURE</u>	<u>2022/23</u>	<u>2021/22</u>	<u>Change on Previous Year</u>
Annual Lease Rent of Mill Pond	0	0	0
Broomfield Schools Photographic Competition	322	306	16
Annual Dinner, Spring Talk, Summer Party, AGM costs	2,032	200	1,832
Public Liability Insurance	308	358	(51)
Legal Fees	0	1,618	(1,618)
Planting	166	155	11
Maintenance - infrastructure	463	615	(153)
Maintenance - vegetation	473	107	367
Printing/Stationery/Postage/Misc	155	185	(30)
Signage	127	163	(36)
Website	122	89	34
Sluice Gate & Apron	0	2,208	(2,208)
<b>Total Expenditure</b>	<b>4,169</b>	<b>6,005</b>	<b>(1,835)</b>

**NET INCOME (EXPENDITURE)**                      **3,909**                      **(344)**

## BALANCE SHEET

<u>ASSETS</u>	<u>2022/23</u>	<u>2021/22</u>	<u>Change on Previous Year</u>
Cash at Bank*	16,320	12,412	3,909
Accounts Receivable (Debtors)	-	-	-
	<b>16,320</b>	<b>12,412</b>	<b>3,909</b>
<u>LIABILITIES</u>	<u>2022/23</u>	<u>2021/22</u>	
Accounts Payable (Creditors)/Cheques in hand	-	-	-
<b>NET ASSETS</b>	<b>16,320</b>	<b>12,412</b>	<b>3,909</b>
*Broomfield Schools Photographic Balance incl above	300	622	(322)

Approved by the Trustees  
January 2024

To receive, and, if agreed, approve,  
the Annual Statement of Accounts  
for the year ending 30 September  
2023

NB Financial accounts have been  
reviewed by the Trustees.

# 2022-23 Income

<u>INCOME</u>	<u>2022/23</u>	<u>2021/22</u>	<u>Change on Previous Year</u>
Subscriptions	1,725	1,649	76
Donations	1,083	1,361	(277)
Dolphin Quay Rent	2,000	2,000	0
Gift Aid	429	543	(115)
Sale of Bird Books, Notelets etc	46	26	20
Annual Dinner income	2,795	82	2,713
Other income	0	0	0
Total Income	8,078	5,661	2,417

- Subscriptions / Donations / Gift Aid – similar to 2021/22
- Some generous donors who wish to remain anonymous
- First Annual Dinner since 2019

# 2022-23 Expenditure

<u>EXPENDITURE</u>	<u>2022/23</u>	<u>2021/22</u>	<u>Change on Previous Year</u>
Broomfield Schools Photographic Competition	322	306	16
Annual Dinner, Spring Talk, Summer Party, AGM costs	2,032	200	1,832
Public Liability Insurance	308	358	(51)
Legal Fees	0	1,618	(1,618)
Planting	166	155	11
Maintenance - infrastructure	463	615	(153)
Maintenance - vegetation	473	107	367
Printing/Stationery/Postage/Misc	155	185	(30)
Signage	127	163	(36)
Website	122	89	34
Sluice Gate & Apron	0	2,208	(2,208)
<b>Total Expenditure</b>	<b>4,169</b>	<b>6,005</b>	<b>(1,835)</b>

- No significant expenditure (Owner Transfer legal fees & sluice apron spend in 2021/2)
- Infrastructure Maintenance - £300 contribution for CCTV, Waterfall foam for tidal gates (£80)
- Vegetation Maintenance – new pole cutter & batteries (£335), rubber matting for reeds (£114).

# 2022-23 Summary & Bank Account Position

<u>ASSETS</u>	<u>2022/23</u>	<u>2021/22</u>	<u>Change on Previous Year</u>
Cash at Bank*	16,320	12,412	3,909
Accounts Receivable (Debtors)	-	-	
	<b>16,320</b>	<b>12,412</b>	<b>3,909</b>
 <u>LIABILITIES</u>	 <u>2022/23</u>	 <u>2021/22</u>	
Accounts Payable (Creditors)/Cheques in hand	-	-	
 <u>NET ASSETS</u>	 <b>16,320</b>	 <b>12,412</b>	 <b>3,909</b>
 *Broomfield Schools Photographic Balance incl above	 300	 622	 (322)

- Profit of £3,909
- £300 remaining in Broomfield fund (topped up by Nick Broomfield after year end)
- Bank interest / investment in funds (for discussion later)



# FINANCIAL ACCOUNTS – MOTION 3

To receive, and, if agreed, approve, the Annual Statement of Accounts for the year ending 30 September 2023

- *The Motion was approved*

# ELECTION OF TRUSTEES

Maximum term for a Trustee is 9 years.

1/3 of Trustees must resign at every AGM.

Currently 6 Trustees:

## ***Hampshire side***

- *Jo Greenfield (Chairman) (2019)*
- *Simon Eveleigh (2019)*
- *Maire Park (Social Secretary) (2021)*

## ***West Sussex side***

- *Sharon Corbett (Membership Secretary) (2019)*
- *Simon Dwyer (2019)*
- *Jim Hailstone (Infrastructure Maintenance) (2022)*

# ELECTION OF TRUSTEES – Motion 4

**4 (i) Jim Hailstone** resigns by rotation offers himself for re-election

*The Motion was approved*

**4 (ii) Maire Park** resigns by rotation offers herself for re-election

*The Motion was approved*

**Proposal for election of new Trustees** – N/A – applications welcome!

# MEMBERSHIP LEVY – MOTION 5

	<u>Full Member</u>	<u>Associate Member</u>
1969	£ 7	£ 5
1980	£ 10	£ 5
2004	£ 15	£ 8
Oct 2024	£ 20	£10
1969	£ 7	= £115.58 today
1980	£ 10	= £53.74 today
2004	£ 15	= £28.86 today

# MEMBERSHIP LEVY – MOTION 5

To INCREASE the membership levy as follows:

- £20 per annum for full members (previously £15)
- £10 per annum for Associate Members/Friends of the CIO (previously £8)

Effective date 1 October 2024 (new financial year)

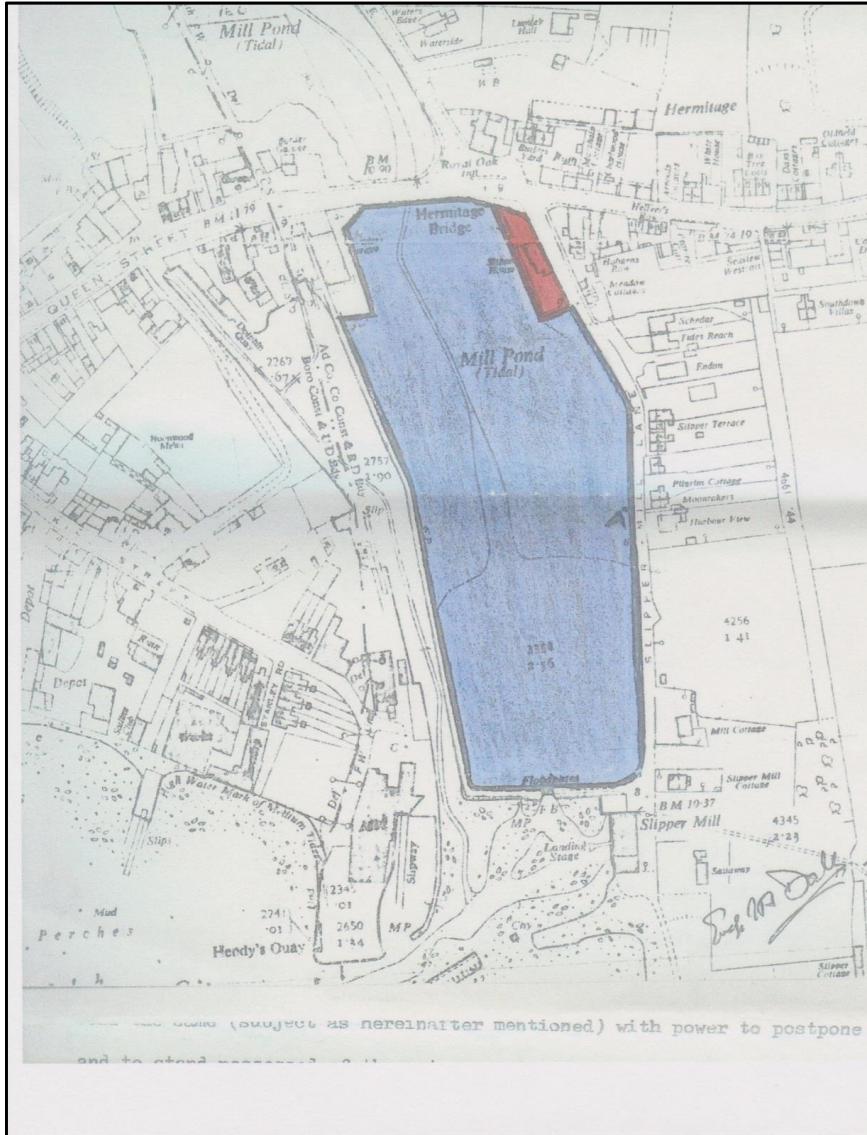
*The Motion was approved*

*Members were reminded that they are welcome to donate larger amounts – this can be paid in the usual way direct to the bank account or by cheque/ cash. There is a “donations” page on our website which can also be used for legacies.*

*It was clarified that Full (ie Voting) Membership is open to all households with property that lies within close proximity of the Pond – ie it does not require a view of the Pond. All new full members are subject to the approval of the Trustees.*

# **SMPPA CHAIRMAN'S REPORT 2022-23 HIGHLIGHTS**

# OWNERSHIP TRANSFER



- Legal paperwork completed 22 April 2022
- Land Registry title still not yet complete - currently taking around 3 years to register more complicated first registrations, like this one

***Questions were asked from some newer members who were not aware of the background – more info on the SMPPA website historical timeline – see [www.smppa.org.uk/timeline](http://www.smppa.org.uk/timeline) (2022) which has a link to The Ems newspaper article and describes the background***

# **2022-23 ACTIVITIES**



# 2022-23 ACTIVITIES

- October 2022 workparty
- Annual Dinner in November 2022 (first since 2019)
- CCTV installed (anti-social behaviour) – spring 2023
- Broomfield Schools Photographic Competition – April/May
- Summer Garden Party – July
- Infrastructure maintenance (no major costs)
- Vegetation maintenance
- Planting
- Reeds

# PLANTING (Sharon Corbett)



- Buddleia removal by caravan park (completed October 2022) – overgrown & rats there – a significant job – hedging now planted instead
- Policy is to plant indigenous, sustainable, salt resistant species with fine foliage that allows views through – now have a good variety of habitat and food for wildlife
- Current trees: (north to south) – field maple, sea buckthorn, olive, 2 sea buckthorn, 2 rowan, sea buckthorn, ornamental hawthorn, downy birch, 2 wild cherry, sea buckthorn, white willow
- Shrubs: 9 dog rose, 2 rugosa rose a wild privet and 2 hawthorn
- Hedging: 4 short hedges – 2 already established and 2 newly planted towards the southern end

# PLANTING (Sharon Corbett)

- There are no current plans for any further hard planting
- New plants have survived the winter well and new root growth should mean that summer watering is no longer needed
- Growth of the 2 new hedges is slow – it is necessary to trim plant growth around the saplings to allow them to get sufficient light.
- Wildflower seeds sown in the south-east corner were mainly corn marigold which is an annual and so didn't return last summer.
- Plants which have not survived: sea buckthorn whips, teasle plugs, sea lavender, marsh marigold and yellow iris. Failure could be due to a range of factors including soil (salinity?), site or moisture level.
- The mobile home delivery – the tree cut down to enable a new mobile home to access the caravan park has been replaced
- The missing stakes!! Any stakes appear to be constantly removed by passers by, so are not now being replaced.

# PLANTING (Sharon Corbett)

- *Several households from Slipper Road (ranging between no.s 9-33) complained about the lack of consultation regarding planting on the banks near their properties.*
- *Also, that their understanding was that no plants above 3 ft in height would be planted (origin of this height subsequently not verified).*
- *Pam Wilkinson offered to write a “Planting Policy” in order to have a clearer framework to work within*
- *Jo Greenfield will follow up*



# WORK PARTIES – OCTOBER 2022 & 2023



*Slipper Mill Pond Preservation Association CIO - Charity no. 1180249 – 13 March 2024 AGM (YE 30 September 2023)*



# VEGETATION MAINTENANCE – 2022/23 (Jim Hailstone Lead)



- Strimming of east bank in week running up to October work party (Slipper Road team)
- Work party removal and gathering of arisings (grasses, wildflowers, reeds)
- Disposal of arisings to rubbish tip
- Strimming is hard physical exercise given nature of work
- Tools & equipment problems – looking at options for 2024 workparty
- Gathering of arisings works well – no shortage of volunteers!

# INFRASTRUCTURE MAINTENANCE – 2022/23 (Jim Hailstone Lead)

- Replacement footbridge uprights (October 2022 workparty – Simon Eveleigh + others)
- Tidal gate cleaning (Jim / Fraser Dibden)
- South-east kissing gate repair (Jim)
- Bird raft minor repairs (Jim / Simon Dwyer)
- Repairs to the gabion meshing along the west and south banks (Jim)
- Cavity repairs on the west bank footpath (Leigh Charlton)
- Replacement post to chain back the tidal gates (Leigh)
- Removal of an old bicycle stand that had become a trip hazard (Leigh)
- Monitoring of slippage on South bank (Leigh / Jim)

# TIDAL GATES



*October 2022 - Before cleaning - Fraser Dibden showing the amount of growth on the gates*



*Afterwards - a heron admiring the newly cleaned gates*

*Leakage around tidal gate corner posts next to wall*



*October 2023 Filling the leaks with “waterfall foam”*



# BIRD RAFTS



- Minor maintenance done in 2023
- Access for birds to be improved in 2024
- Starting to break up / rot – polystyrene causing litter
- Difficult to repair / replace due to their size and weight. Can only be done during winter months due to breeding season.
- GBBGs are here regularly still - up to 6 birds at a time – but did not nest in 2023

*Floral display on the southern  
bird raft – summer 2023*

# SOUTH BANK CRACK - SLIPPAGE



- In August, Leigh Charlton set up markers on the bank at the southwest corner adjacent to where the boats are moored
- Monitoring any movement
- Likely to require strengthening here in the not too distant future
- Boat ladder fixings are possibly causing damage to the gabions / bank – we are in contact with CHC Moorings (moorings are private)



*Monitoring the gap*



# SLUICE APRON UNDERCUT



*Monitoring the undercut*

- When repaired in February 2022, undercut was not filled.
- Monitoring for erosion.
- Recommended to infill at some stage
- Logical to infill at same time as south bank slippage.
- *Jim Hailstone has been in touch with John Blamire who previously repaired the concrete apron. John will provide a quote for the south bank slippage, sluice apron undercut and new posts to mark the edges of the apron*
- *Mark Davis stated that they are looking at resurfacing Slipper Road in the south-east corner, and that changes to drainage into the Pond may be required (he will follow up with JH )*

# DOLPHIN QUAY

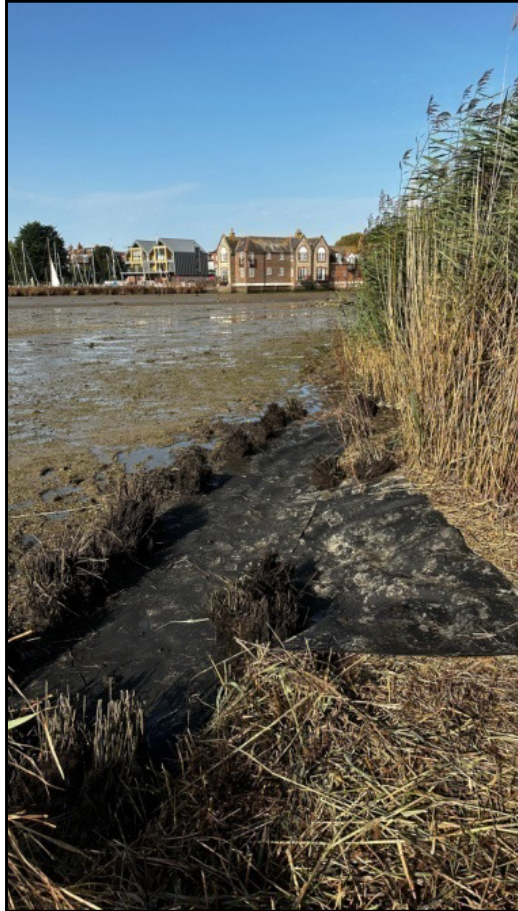


- Erosion by wave action
- Damage to bank caused by gang planks
- No action in 2022/3
- *Questions were asked from some newer members who were not aware of the background, and the lease income paid by the boat yard for access to the moorings.*
- *More info on the SMPPA website at [www.smppa.org.uk/dolphin-quay-footpath](http://www.smppa.org.uk/dolphin-quay-footpath) - which has a link to The EMS newspaper article from Winter 2021, and describes the background*



# PHRAGMITES AUSTRALIS

## COMMON REEDS - (Simon Eveleigh)



*October 2023 Work Party Trial  
Matting in north section*

- Common Reeds deliberately planted in the 1980s to strengthen the bank (taken from Peter Pond)
- First complaint about reeds obstructing views was documented in Committee Meeting Minutes from a Mr Treagust in 1994
- Complaints from households overlooking the two northernmost sections increased in the early 2000s and have been ongoing ever since
- Marker posts show that the reeds are not generally moving INTO the Pond much (salinity probably a factor)
- Marker posts show that the reeds are slowly creeping ALONG the water line
- Northern section now very dense and tall

# COMMON REEDS (Simon Eveleigh)

- **Targeted killing of individual reeds** can control spread up the banks – timing is important – will have a strong focus on this in 2024 (May/June). Need to be careful using weedkiller near the water.
- **Matting in the water** seems effective for blanketing/drowning any growth (need to cut first)
- **Cutting back reeds** is very labour intensive and reeds seem to grow back stronger and thicker – not recommended
- 2023/2024 **trial matting** in north-east corner
- More trials ongoing – proposal to form **reeds subgroup** (no Committee members)

# COMMON REEDS (Simon Eveleigh)

## SUBGROUP REMIT

- Remember the Pond is :
  - a designated West Sussex Local Wildlife Site
  - part of the River Ems Strategic Wildlife Corridor
  - part of Chichester Harbour "National Landscape" (formerly AONB).
- Data is crucial – monitor and measure all areas of reeds, including any test areas
- Test what works – proposals must not commit the SMPPA to large amounts of future work
- Tests need to stick inside the plan
- Survey members and investigate potential improved sightlines of the Pond
- Propose a long term strategy
- We have identified 4 subgroup members but need a “lead” (non-Committee)

# COMMON REEDS (Simon Eveleigh)

## SUBGROUP REMIT

- *Several households from Slipper Road (ranging between no.s 9-29) complained about the reeds blocking their views and that passers by also commented.*
- *It was agreed that monitoring and controlling the reeds is essential.*
- *It is hoped that the new Reeds Subgroup will be helpful for proposing, planning and actioning future work (so the Trustees can have more time to focus on other matters). Rob Turner will follow up.*
- *More trials with matting are continuing in the north-east corner.*
- *Nick Madina clarified that we are only referring to the Common Reeds (Phragmites Australis) and not to Sea Club Rush, which is the other small “reed” on the bank and is non-invasive and easy to dig up / replant*



# WILDLIFE



*Peter Pond – spot the water vole!*

- All new planting is to encourage wildlife
- No formal wildlife monitoring – mostly bird and fish “observations” (not recorded)
- Volunteers welcome!
- *Brenda Scott said that Brook Meadow have a Wildlife Blog that is worth looking at, in case we wish to do something similar.*
- *Stephanie Bamford mentioned that there are various “apps” that are very useful for identifying plants and wildlife*
- *Gilbert Park offered to come up with some suggestions to get people more involved with wildlife monitoring.*

# SIGNAGE – “BIRD AWARE”



New “Dogs Alongside” signage

- New “Bird Aware Solent” signs installed on the kissing gates and along Slipper Road
- [www.birdaware.org](http://www.birdaware.org) - charity that works to raise awareness of birds and encourages everyone to act responsibly with regard to wildlife
- Dogs chasing birds can have a life-threatening effect on birds, particularly during their migratory rest periods or when they need to feed
- Ask owners to keep their dogs “close by” so they do not disturb wildlife
- ***Jane Barry raised concerns about speeding on the A259 in Hermitage, particularly between Peter Pond and Slipper Mill Pond. Birds do get run over at this time of year in particular. Jo Greenfield will follow up to see if the Council have any plans for action to reduce speeding.***



# FISHING



- Since fishing policy clarified, now rarely get asked about fishing rules
- Rules much clearer:
  - Line fishing only from the south bank
  - Anglers to return all fish to the Pond, regardless of size or species
- Cast net fishing seems to have reduced further in 2023 (Rural Crime Police made prosecution)
- ***Fishing from the A259 pavement is still a problem as it is very narrow. It is doubtful that we can put up signage as the pavement, walls and posts are owned by the Council, not by the SMPPA. It was suggested that anglers always be directed to fish from the south bank, to try to move them on.***

# ANTISOCIAL BEHAVIOUR (ASB) - 2023



2022



2022



2023

- Graffiti and vandalism in 2022 continued through 2023. Not as frequent but behaviour more extreme. Perspex for information board now replaced twice. Other signs thrown into Pond.
- Damage to boats, trespassing on property, stone throwing at residents, ball bearing catapults at windows.
- Less swimming in Pond itself as put “prikkastrip” on top of tidal gates so can’t climb on it.
- Particular impact on Slipper Mill residents and Marina Close opposite.

# ANTISOCIAL BEHAVIOUR – 2023/24

- Working closely with Emsworth Yacht Harbour (Tom Marfleet)
- CCTV and other preventative measures installed on Slipper Mill (thanks to Mark & Sally Davis)
- SMPPA contributed 1/7<sup>th</sup> (£300) of the CCTV cost, along with several other local households
- “Pond Life” WhatsApp group set up to communicate ASB issues. Proving invaluable for information sharing. Has 39 members as of March 2024 (not all are SMPPA members, but residents who are impacted)
- **HOT OFF THE PRESS!!!** 4<sup>th</sup> March 2024 Meeting at The Deck with 20+ local residents and representatives from:
  - Hampshire Police, West Sussex Police, Chichester Harbour Conservancy (CHC), Southbourne Parish Council, Havant Borough Council
- Recommendations from this meeting to follow.

# **EVENTS**

## **(Maire Park)**



# ANNUAL DINNER November 2022

## Winning Poem from the Annual Dinner – 25 November 2022

*written by “the Roundhouse Meadow” table*

*Now we all love Roundhouse Meadow, but lately we've been torn*

*Because it's been invaded by builders at dawn*

*They've lit a lot of fires, and blocked our drives and view*

*They put the radio on max and turned the air quite blue*

*However, in the evening, when all is quiet and still*

*We remember why we love our pond and take a sleeping pill*

- Brookfield Hotel – for the last time?
  - 71 Guests
- Aeroplane Making & Poetry Competition
  - Quiz about the Pond & Emsworth

*Seems a long time ago!*

# ANNUAL DINNER - November 2022

- Very generous donations from 9 local businesses
- Net £650 after the raffle, dinner ticket mark-up and costs





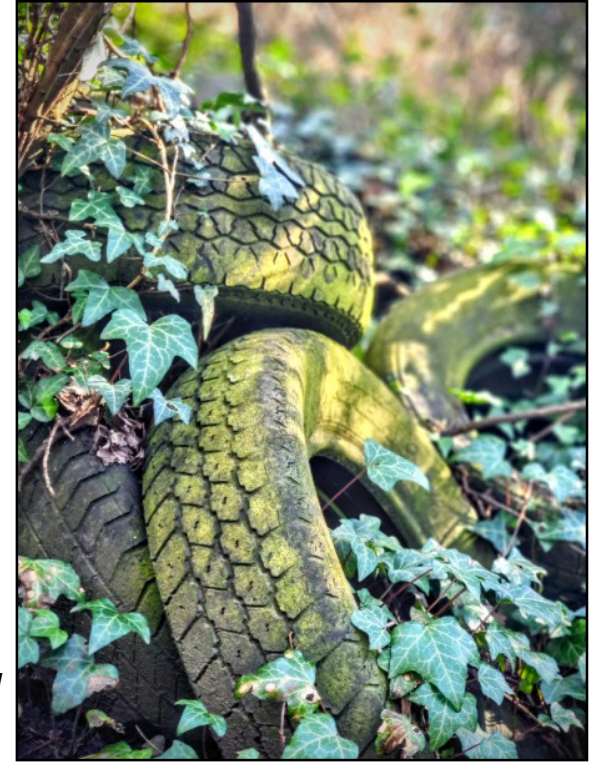
# SPRING TALK

- Last talk was in March 2022 by Sarah Hughes, Strategic Wildlife Corridors Project Officer (Chichester District Council) – poorly attended
- Wide number of talks run by other local organisations, and difficulty finding speakers who do not charge
- No Spring Talk in 2023. Future talks under review.

# BROOMFIELD SCHOOLS PHOTO COMPETITION - 2023



*Winner - Local Nature:  
"Swanning around... What a  
poser!" by Sonny Sivieri, Year 6,  
St James Primary School*



*Winner - Any Subject: "Troublesome  
Tyres" by Grace Etherington  
Year 4, Emsworth Primary School*

- Pupils from years 3-6 of six local primary schools can submit one photo in each of two categories: Local Nature and Any Subject.
- 73 photographs entered from 39 pupils in 2023 (due to large no. entries in 2022, reduced entries from 2 to 1 per category in 2023)
- Prizes awarded in each category/age group with 2 overall winners. Judges also awarded 13 "certificates of merit".

# BROOMFIELD SCHOOLS PHOTO COMPETITION - 2023



All photos are exhibited in the community centre as part of the Emsworth Arts Trail (early May bank holiday)

- Judging carried out by Gilbert Park, Jeff Thatcher, Claire Starling
- Jo liaises with schools and pupils
- Maire does photo mounting/ display and Co-op refreshments
- Winning photos are displayed in the Emsworth Co-op afterwards
- All pupils get their printed/ mounted photos

# BROOMFIELD SCHOOLS PHOTO COMPETITION

- 2023 set up an online form to simplify entry process for submitting photos
- Very popular with the 6 participating primary schools.
- Helps to involve the SMPPA in the local community
- Costs approx £350 pa in prizes and materials
- Maurice's son Nick Broomfield has topped up funds – current balance is £650 which will fund 2024 and 2025. Hoping he will continue to sponsor it.
- Nick coming to the prize giving this year



# SUMMER GARDEN PARTY

## 23<sup>rd</sup> July 2023



*Hosted at Slipper House again by Claire Starling & Simon Dwyer*  
Record turnout of more than 50 members  
A most pleasant way to spend a Sunday afternoon as usual!

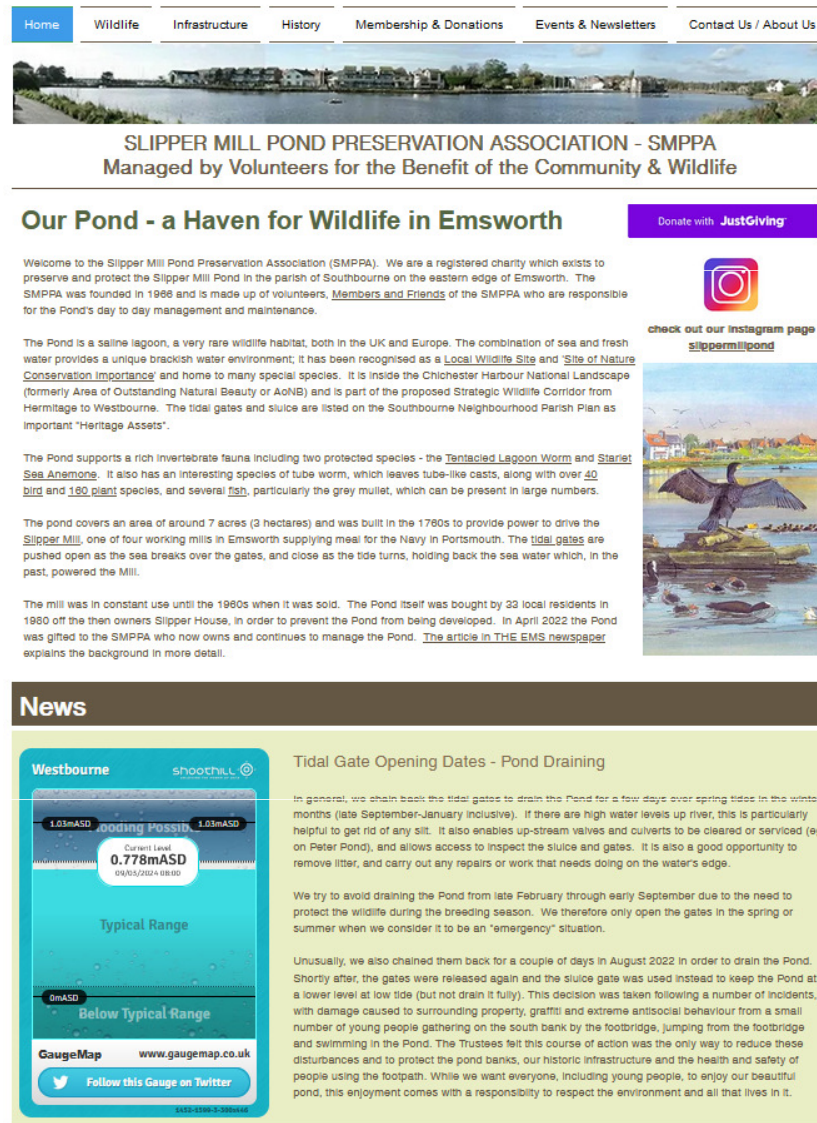
# COMMUNICATIONS

# COMMUNICATIONS

- Newsletter twice a year. Still print and hand deliver to 98 members (> 70% of total members). 14 Members don't have email addresses.
- Website (Jo)
- Instagram account (Linzi Coull)
- “Pond Life” WhatsApp group for reporting anti-social behaviour (Jo is admin)
- Presentations/updates at AGM & Annual Dinner



# WEBSITE



[www.smppa.org.uk](http://www.smppa.org.uk)

- *Westbourne River Gauge Level*
- *Useful contacts*
- *Historical Timeline*
- *Events information incl Broomfield photo competition*

*etc etc*



# INSTAGRAM ACCOUNT

## [www.instagram.com/slippermillpond](https://www.instagram.com/slippermillpond)



slippermillpond

Following ▾

Message



25 posts

83 followers

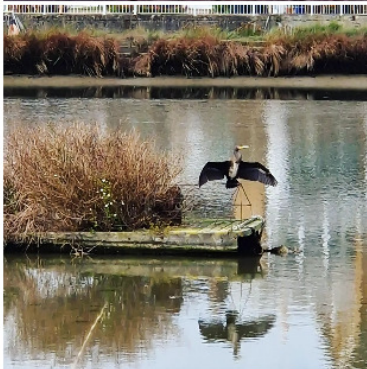
8 following

Slipper Mill Pond Preservation Association is a registered charity which exists to preserve and protect the Slipper Mill Pond in Emsworth.

Followed by [finalstrawfoundation](#)

POSTS

TAGGED



*Linzi Coull has kindly set up an instagram account "slippermillpond" where she posts some super photos*

*Do take a look and please follow!*

# FUNDING

# FUNDING OF THE SMPPA

- £2,000+ in membership fees (incl Gift Aid)
- £2,000 per annum from Dolphin Quay rent
- Some generous donations
- Only real fund-raising in recent years has been the Annual Dinner
- Majority of spend is on infrastructure (expensive unless grants)
- Bank account is at £22,600 today. No interest account.
- Barclays savings account would only pay 1.3%.
- Put some funds into long term/perpetuity/endowment?
- Would it encourage more donors/legacies if long term fund or endowment established?

# FUNDING OF THE SMPPA

- As a charity, we are restricted on possible savings accounts / funds – due to need for Trustee authorisations, different tax treatment, ethics etc
- eg M&G Charifund (UK Equities Fund for Charities) or M&G Charity Multi Asset Fund??? Historic yields 5.3% / 3.9%
- CAF Bank specialises in charities banking (2.5% interest, £5 monthly charge)
- Thoughts? Does the SMPPA Constitution need an SMPPA Investment Policy or Charter? Special General Meeting vote?
- *Members were generally in support of investing SMPPA funds to gain better returns, as long as investments are not “in perpetuity” or have very stringent conditions*
- *It was suggested that a “shopping list” of short and long-term needs be worked on as fundraising is generally more successful if projects are well defined and quantified. Jo Greenfield will follow up.*

# CHALLENGES

# ONGOING CHALLENGES

- Common Reeds – Phragmites Australis
- Antisocial behaviour
- South Bank Slippage (monitoring)
- Sluice Apron potential undercutting (monitoring)
- Dolphin Quay bank erosion



**THANK YOU TO  
ALL OUR  
VOLUNTEERS and  
TRUSTEES!**

**Any Questions  
or  
Any Other Business?**